

## Product datasheet for **TA360201**

### RAC1 Rabbit Polyclonal Antibody

#### Product data:

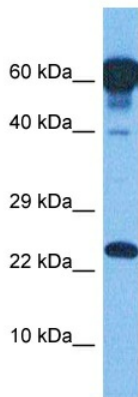
Product Type:	Primary Antibodies
Applications:	WB
Reactivity:	Human, Mouse
Host:	Rabbit
Clonality:	Polyclonal
Immunogen:	The immunogen is a synthetic peptide directed towards the middle region of human RAC1
Specificity:	<b>Expected reactivity:</b> Human
Formulation:	Liquid. Purified antibody supplied in 1x PBS buffer with 0.09% (w/v) sodium azide and 2% sucrose. <i>Note that this product is shipped as lyophilized powder to China customers.</i>
Concentration:	lot specific
Purification:	Affinity purified
Conjugation:	Unconjugated
Storage:	For short term use, store at 2-8°C up to 1 week. For long term storage, store at -20°C in small aliquots to prevent freeze-thaw cycles.
Stability:	Shelf life: one year from despatch.
Predicted Protein Size:	21 kDa
Gene Name:	ras-related C3 botulinum toxin substrate 1 (rho family, small GTP binding protein Rac1)
Database Link:	<a href="#">NP_008839.2</a> <a href="#">Entrez Gene 19353 Mouse</a> <a href="#">Entrez Gene 5879 Human</a> <a href="#">P63000</a>
Background:	The protein encoded by this gene is a GTPase which belongs to the RAS superfamily of small GTP-binding proteins. Members of this superfamily appear to regulate a diverse array of cellular events, including the control of cell growth, cytoskeletal reorganization, and the activation of protein kinases. Two transcript variants encoding different isoforms have been found for this gene.
Synonyms:	MGC111543; MIG5; p21-Rac1; PAK1; TC-25
Protein Families:	Druggable Genome



[View online »](#)

**Protein Pathways:**

Adherens junction, Amyotrophic lateral sclerosis (ALS), Axon guidance, B cell receptor signaling pathway, Chemokine signaling pathway, Colorectal cancer, Epithelial cell signaling in Helicobacter pylori infection, Fc epsilon RI signaling pathway, Fc gamma R-mediated phagocytosis, Focal adhesion, Leukocyte transendothelial migration, MAPK signaling pathway, Natural killer cell mediated cytotoxicity, Neurotrophin signaling pathway, Pancreatic cancer, Pathways in cancer, Regulation of actin cytoskeleton, Renal cell carcinoma, Toll-like receptor signaling pathway, VEGF signaling pathway, Viral myocarditis, Wnt signaling pathway

**Product images:**


Host: Rabbit  
 Target Name: RAC1  
 Sample Tissue: Fetal Lung Lysate  
 Antibody Dilution: 1.0µg/ml

Host: Rabbit  
 Target Name: RAC1  
 Sample Tissue: Human Fetal Lung  
 Antibody Dilution: 1.0ug/ml



Host: Rabbit  
 Target Name: Rac1  
 Sample Type: Mouse Spleen Lysate  
 Antibody Dilution: 1.0µg/ml

Host: Mouse  
 Target Name: RAC1  
 Sample Tissue: Mouse Spleen  
 Antibody Dilution: 1ug/ml