

## Product datasheet for **TA360200**

### **RAB3B Rabbit Polyclonal Antibody**

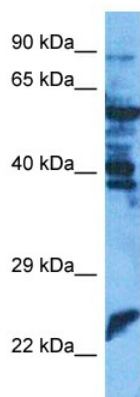
#### **Product data:**

Product Type:	Primary Antibodies
Applications:	WB
Reactivity:	Human
Host:	Rabbit
Clonality:	Polyclonal
Immunogen:	The immunogen is a synthetic peptide directed towards the N terminal region of human RAB3B
Specificity:	<b>Expected reactivity:</b> Human
Formulation:	Liquid. Purified antibody supplied in 1x PBS buffer with 0.09% (w/v) sodium azide and 2% sucrose.
Concentration:	lot specific
Purification:	Affinity purified
Conjugation:	Unconjugated
Storage:	For short term use, store at 2-8°C up to 1 week. For long term storage, store at -20°C in small aliquots to prevent freeze-thaw cycles.
Stability:	Shelf life: one year from despatch.
Predicted Protein Size:	25 kDa
Gene Name:	RAB3B, member RAS oncogene family
Database Link:	<a href="#">NP_002858.2</a> <a href="#">Entrez Gene 5865 Human</a> <a href="#">P20337</a>
Synonyms:	RAB3B
Protein Families:	Druggable Genome
Protein Pathways:	Tight junction



[View online »](#)

## Product images:



Host: Rabbit  
Target Name: RAB3B  
Sample Tissue: HepG2 Cell Lysate  
Antibody Dilution: 1.0 $\mu$ g/ml

Host: Rabbit  
Target Name: RAB3B  
Sample Tissue: Human HepG2 Whole Cell  
Antibody Dilution: 1.0ug/ml