

Product datasheet for **TA360194**

PSG7 Rabbit Polyclonal Antibody

Product data:

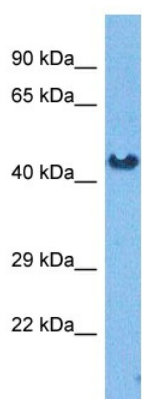
Product Type:	Primary Antibodies
Applications:	WB
Reactivity:	Human
Host:	Rabbit
Clonality:	Polyclonal
Immunogen:	The immunogen is a synthetic peptide directed towards the middle region of human PSG7
Specificity:	Expected reactivity: Human
Formulation:	Liquid. Purified antibody supplied in 1x PBS buffer with 0.09% (w/v) sodium azide and 2% sucrose. <i>Note that this product is shipped as lyophilized powder to China customers.</i>
Concentration:	lot specific
Purification:	Affinity purified
Conjugation:	Unconjugated
Storage:	For short term use, store at 2-8°C up to 1 week. For long term storage, store at -20°C in small aliquots to prevent freeze-thaw cycles.
Stability:	Shelf life: one year from despatch.
Predicted Protein Size:	47 kDa
Gene Name:	pregnancy specific beta-1-glycoprotein 7 (gene/pseudogene)
Database Link:	NP_002774.2 Entrez Gene 5676 Human Q13046
Background:	This gene is a member of the pregnancy-specific glycoprotein (PSG) gene family. The PSG genes are a subgroup of the carcinoembryonic antigen (CEA) family of immunoglobulin-like genes, and are found in a gene cluster at 19q13.1-q13.2 telomeric to another cluster of CEA-related genes. The PSG genes are expressed by placental trophoblasts and released into the maternal circulation during pregnancy, and are thought to be essential for maintenance of normal pregnancy. Alternative splicing results in multiple transcript variants.
Synonyms:	OTTHUMP00000209547; PSBG-7; PSG1; PSGGA



[View online »](#)

Protein Families: Secreted Protein

Product images:



Host: Rabbit
Target Name: PSG7
Sample Tissue: HCT116 Cell Lysate
Antibody Dilution: 1.0g/ml

Host: Rabbit
Target Name: PSG7
Sample Tissue: Human HCT116 Whole Cell
Antibody Dilution: 1.0ug/ml