

Product datasheet for **TA360193**

Pregnancy Specific Glycoprotein 1 (PSG1) Rabbit Polyclonal Antibody

Product data:

Product Type:	Primary Antibodies
Applications:	WB
Reactivity:	Human
Host:	Rabbit
Clonality:	Polyclonal
Immunogen:	The immunogen is a synthetic peptide directed towards the C terminal region of human PSG1
Specificity:	Expected reactivity: Human
Formulation:	Liquid. Purified antibody supplied in 1x PBS buffer with 0.09% (w/v) sodium azide and 2% sucrose. <i>Note that this product is shipped as lyophilized powder to China customers.</i>
Concentration:	lot specific
Purification:	Affinity purified
Conjugation:	Unconjugated
Storage:	For short term use, store at 2-8°C up to 1 week. For long term storage, store at -20°C in small aliquots to prevent freeze-thaw cycles.
Stability:	Shelf life: one year from despatch.
Predicted Protein Size:	47 kDa
Gene Name:	pregnancy specific beta-1-glycoprotein 1
Database Link:	NP_001171754.1 Entrez Gene 5669 Human P11464
Background:	The human placenta is a multihormonal endocrine organ that produces hormones, enzymes, and other molecules that support fetal survival and development. Pregnancy-specific beta-1-glycoprotein (PSBG, PSG) is a major product of the syncytiotrophoblast, reaching concentrations of 100 to 290 mg/l at term in the serum of pregnant women (Horne et al., 1976 [PubMed 971765]). PSG is a member of the immunoglobulin (Ig) superfamily (Watanabe and Chou, 1988 [PubMed 3257488]; Streydio et al., 1988 [PubMed 3260773]).[supplied by OMIM, Oct 2009]

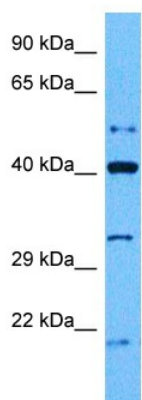


[View online »](#)

Synonyms: B1G1; CD66f; DHFRP2; FL-NCA-1/2; FLJ90598; FLJ90654; PBG1; PS-beta-C/D; PSBG-1; PSBG1; PSG95; PSGGA; PSGIIA; SP1

Protein Families: Secreted Protein

Product images:



Host: Rabbit
 Target Name: PSG1
 Sample Tissue: Jurkat Cell Lysate
 Antibody Dilution: 1.0µg/ml

Host: Rabbit
 Target Name: PSG1
 Sample Tissue: Human Jurkat Whole Cell
 Antibody Dilution: 1.0ug/ml