

Product datasheet for **TA360191**

Trypsin (PRSS1) Rabbit Polyclonal Antibody

Product data:

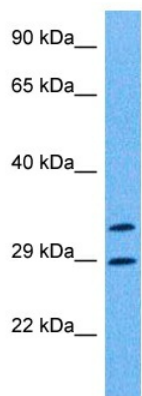
Product Type:	Primary Antibodies
Applications:	WB
Reactivity:	Human
Host:	Rabbit
Clonality:	Polyclonal
Immunogen:	The immunogen is a synthetic peptide directed towards the middle region of human PRSS1
Specificity:	Expected reactivity: Human
Formulation:	Liquid. Purified antibody supplied in 1x PBS buffer with 0.09% (w/v) sodium azide and 2% sucrose. <i>Note that this product is shipped as lyophilized powder to China customers.</i>
Concentration:	lot specific
Purification:	Affinity purified
Conjugation:	Unconjugated
Storage:	For short term use, store at 2-8°C up to 1 week. For long term storage, store at -20°C in small aliquots to prevent freeze-thaw cycles.
Stability:	Shelf life: one year from despatch.
Predicted Protein Size:	27 kDa
Gene Name:	protease, serine 1
Database Link:	NP_002760.1 Entrez Gene 5644 Human P07477
Background:	This gene encodes a trypsinogen, which is a member of the trypsin family of serine proteases. This enzyme is secreted by the pancreas and cleaved to its active form in the small intestine. It is active on peptide linkages involving the carboxyl group of lysine or arginine. Mutations in this gene are associated with hereditary pancreatitis. This gene and several other trypsinogen genes are localized to the T cell receptor beta locus on chromosome 7.
Synonyms:	Beta-trypsin; MGC120175; MGC149362; TRP1; TRY1; TRY4; TRYP1
Protein Families:	Druggable Genome, Secreted Protein



[View online »](#)

Protein Pathways: Neuroactive ligand-receptor interaction

Product images:



Host: Rabbit
Target Name: TRY1
Sample Tissue: Fetal Liver Lysate
Antibody Dilution: 1.0 μ g/ml

Host: Rabbit
Target Name: PRSS1
Sample Tissue: Human Fetal Liver
Antibody Dilution: 1.0 μ g/ml