

## Product datasheet for **TA360186**

### PPP3CB Rabbit Polyclonal Antibody

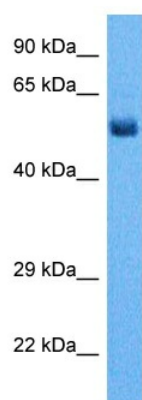
#### Product data:

Product Type:	Primary Antibodies
Applications:	WB
Reactivity:	Human
Host:	Rabbit
Clonality:	Polyclonal
Immunogen:	The immunogen is a synthetic peptide directed towards the N terminal region of human PPP3CB
Specificity:	<b>Expected reactivity:</b> Human
Formulation:	Liquid. Purified antibody supplied in 1x PBS buffer with 0.09% (w/v) sodium azide and 2% sucrose. <i>Note that this product is shipped as lyophilized powder to China customers.</i>
Concentration:	lot specific
Purification:	Affinity purified
Conjugation:	Unconjugated
Storage:	For short term use, store at 2-8°C up to 1 week. For long term storage, store at -20°C in small aliquots to prevent freeze-thaw cycles.
Stability:	Shelf life: one year from despatch.
Predicted Protein Size:	59 kDa
Gene Name:	protein phosphatase 3 catalytic subunit beta
Database Link:	<a href="#">NP_001135825.1</a> <a href="#">Entrez Gene 5532 Human P16298</a>
Synonyms:	CALNA2; CALNB; CNA2
Protein Families:	Druggable Genome, Phosphatase, Transcription Factors
Protein Pathways:	Alzheimer's disease, Amyotrophic lateral sclerosis (ALS), Apoptosis, Axon guidance, B cell receptor signaling pathway, Calcium signaling pathway, Long-term potentiation, MAPK signaling pathway, Natural killer cell mediated cytotoxicity, Oocyte meiosis, T cell receptor signaling pathway, VEGF signaling pathway, Wnt signaling pathway



[View online »](#)

## Product images:



Host: Rabbit  
Target Name: PP2BB  
Sample Tissue: Lung Tumor Lysate  
Antibody Dilution: 1.0 $\mu$ g/ml

Host: Rabbit  
Target Name: PPP3CB  
Sample Tissue: Human lung Tumor  
Antibody Dilution: 1.0ug/ml