

Product datasheet for **TA360184**

PPP2R2B Rabbit Polyclonal Antibody

Product data:

Product Type:	Primary Antibodies
Applications:	WB
Reactivity:	Human
Host:	Rabbit
Clonality:	Polyclonal
Immunogen:	The immunogen is a synthetic peptide directed towards the middle region of human PPP2R2B
Specificity:	Expected reactivity: Human
Formulation:	Liquid. Purified antibody supplied in 1x PBS buffer with 0.09% (w/v) sodium azide and 2% sucrose. <i>Note that this product is shipped as lyophilized powder to China customers.</i>
Concentration:	lot specific
Purification:	Affinity purified
Conjugation:	Unconjugated
Storage:	For short term use, store at 2-8°C up to 1 week. For long term storage, store at -20°C in small aliquots to prevent freeze-thaw cycles.
Stability:	Shelf life: one year from despatch.
Predicted Protein Size:	52 kDa
Gene Name:	protein phosphatase 2 regulatory subunit Bbeta
Database Link:	NP_001258828.1 Entrez Gene 5521 Human Q00005



[View online »](#)

Background:

The product of this gene belongs to the phosphatase 2 regulatory subunit B family. Protein phosphatase 2 is one of the four major Ser/Thr phosphatases, and it is implicated in the negative control of cell growth and division. It consists of a common heteromeric core enzyme, which is composed of a catalytic subunit and a constant regulatory subunit, that associates with a variety of regulatory subunits. The B regulatory subunit might modulate substrate selectivity and catalytic activity. This gene encodes a beta isoform of the regulatory subunit B55 subfamily. Defects in this gene cause autosomal dominant spinocerebellar ataxia 12 (SCA12), a disease caused by degeneration of the cerebellum, sometimes involving the brainstem and spinal cord, and in resulting in poor coordination of speech and body movements. Multiple alternatively spliced variants, which encode different isoforms, have been identified for this gene. The 5' UTR of some of these variants includes a CAG trinucleotide repeat sequence (7-28 copies) that can be expanded to 66-78 copies in cases of SCA12.

Synonyms:

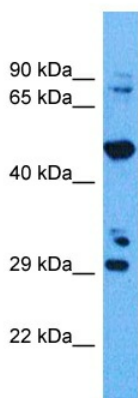
B55-BETA; FLJ95686; MGC24888; PP2A-B55BETA; PP2A-PR55B; PP2AB-BETA; PP2APR55-BETA; PR2AB-BETA; PR2AB55-BETA; PR2APR55-BETA; PR52B; PR55-BETA; SCA12

Protein Families:

Druggable Genome, Phosphatase

Protein Pathways:

Tight junction

Product images:

Host: Rabbit
Target Name: 2ABG
Sample Tissue: 293T Cell Lysate
Antibody Dilution: 1.0g/ml

Host: Rabbit
Target Name: PPP2R2B
Sample Tissue: Human 293T Whole Cell
Antibody Dilution: 1.0ug/ml