

Product datasheet for TA360182

PP2A-alpha (PPP2CA) Rabbit Polyclonal Antibody

Product data:

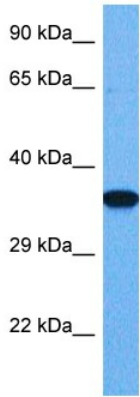
Product Type:	Primary Antibodies
Applications:	IP, WB
Reactivity:	Human, Mouse
Host:	Rabbit
Clonality:	Polyclonal
Immunogen:	The immunogen is a synthetic peptide directed towards the middle region of human PPP2CA
Specificity:	Expected reactivity: Human
Formulation:	Liquid. Purified antibody supplied in 1x PBS buffer with 0.09% (w/v) sodium azide and 2% sucrose. <i>Note that this product is shipped as lyophilized powder to China customers.</i>
Concentration:	lot specific
Purification:	Affinity purified
Conjugation:	Unconjugated
Storage:	For short term use, store at 2-8°C up to 1 week. For long term storage, store at -20°C in small aliquots to prevent freeze-thaw cycles.
Stability:	Shelf life: one year from despatch.
Predicted Protein Size:	36 kDa
Gene Name:	protein phosphatase 2 catalytic subunit alpha
Database Link:	NP_002706.1 Entrez Gene 19052 Mouse Entrez Gene 5515 Human P67775
Background:	This gene encodes the phosphatase 2A catalytic subunit. Protein phosphatase 2A is one of the four major Ser/Thr phosphatases, and it is implicated in the negative control of cell growth and division. It consists of a common heteromeric core enzyme, which is composed of a catalytic subunit and a constant regulatory subunit, that associates with a variety of regulatory subunits. This gene encodes an alpha isoform of the catalytic subunit.
Synonyms:	PP2A-alpha; PP2Ac; PP2CA; PP2Calpha; RP-C
Protein Families:	Druggable Genome, Phosphatase, Transcription Factors



[View online »](#)

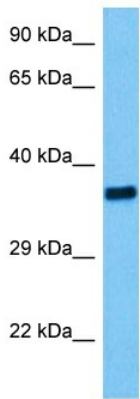
Protein Pathways: Long-term depression, Oocyte meiosis, TGF-beta signaling pathway, Tight junction, Wnt signaling pathway

Product images:



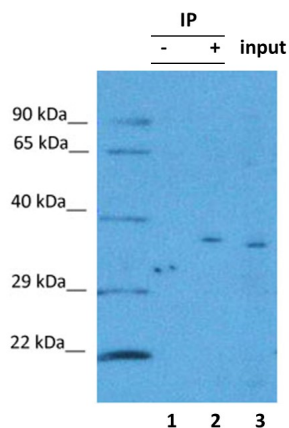
Host: Rabbit
 Target Name: PP2AB
 Sample Tissue: HeLa Cell Lysate
 Antibody Dilution: 1.0g/ml

Host: Rabbit
 Target Name: PPP2CA
 Sample Tissue: Human HeLa Whole Cell
 Antibody Dilution: 1.0ug/ml



Host: Rabbit
 Target Name: Ppp2cb
 Sample Type: Mouse Liver Lysate
 Antibody Dilution: 1.0µg/ml

Host: Mouse
 Target Name: PPP2CB
 Sample Tissue: Mouse Liver
 Antibody Dilution: 1ug/ml



Lysate: HEK293 2mg
 IP: PPP2CA 2ug
 Detection: PPP2CA 3ug/ml

PPP2CA was immunoprecipitated from 2 mg HEK293 Whole Cell Lysate with TA360182 with 1:200 dilution. Western blot was performed using TA360182 at 1/1000 dilution.
 Lane 1: Control IP in HEK293 Whole Cell Lysate.
 Lane 2: PPP2CA IP with TA360182 in HEK293 Whole Cell Lysate.
 Lane 3: Input of HEK293 Whole Cell Lysate.