

## Product datasheet for **TA360179**

### PPM1G Rabbit Polyclonal Antibody

#### Product data:

Product Type:	Primary Antibodies
Applications:	WB
Reactivity:	Human
Host:	Rabbit
Clonality:	Polyclonal
Immunogen:	The immunogen is a synthetic peptide directed towards the C terminal region of human PPM1G
Specificity:	<b>Expected reactivity:</b> Human
Formulation:	Liquid. Purified antibody supplied in 1x PBS buffer with 0.09% (w/v) sodium azide and 2% sucrose. <i>Note that this product is shipped as lyophilized powder to China customers.</i>
Concentration:	lot specific
Purification:	Affinity purified
Conjugation:	Unconjugated
Storage:	For short term use, store at 2-8°C up to 1 week. For long term storage, store at -20°C in small aliquots to prevent freeze-thaw cycles.
Stability:	Shelf life: one year from despatch.
Predicted Protein Size:	59 kDa
Gene Name:	protein phosphatase, Mg <sup>2+</sup> /Mn <sup>2+</sup> dependent 1G
Database Link:	<a href="#">NP_817092.1</a> <a href="#">Entrez Gene 5496 Human</a> <a href="#">O15355</a>
Background:	The protein encoded by this gene is a member of the PP2C family of Ser/Thr protein phosphatases. PP2C family members are known to be negative regulators of cell stress response pathways. This phosphatase is found to be responsible for the dephosphorylation of Pre-mRNA splicing factors, which is important for the formation of functional spliceosome. Studies of a similar gene in mice suggested a role of this phosphatase in regulating cell cycle progression.

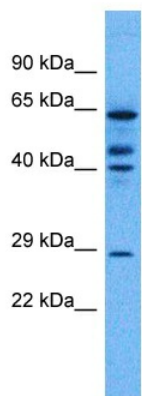


[View online >](#)

**Synonyms:** MGC1675; MGC2870; PP2C-gamma; PP2CG; PP2Cgamma; PPM1C; PPP2CG

**Protein Families:** Druggable Genome, Phosphatase

**Product images:**



Host: Rabbit  
Target Name: PPM1G  
Sample Tissue: Fetal Liver Lysate  
Antibody Dilution: 1.0 $\mu$ g/ml

Host: Rabbit  
Target Name: PPM1G  
Sample Tissue: Human Fetal Liver  
Antibody Dilution: 1.0 $\mu$ g/ml