

Product datasheet for **TA360177**

PGK2 Rabbit Polyclonal Antibody

Product data:

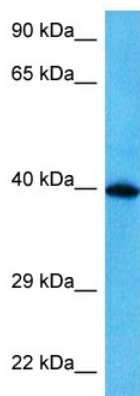
Product Type:	Primary Antibodies
Applications:	WB
Reactivity:	Human
Host:	Rabbit
Clonality:	Polyclonal
Immunogen:	The immunogen is a synthetic peptide directed towards the middle region of human PGK2
Specificity:	Expected reactivity: Human
Formulation:	Liquid. Purified antibody supplied in 1x PBS buffer with 0.09% (w/v) sodium azide and 2% sucrose. <i>Note that this product is shipped as lyophilized powder to China customers.</i>
Concentration:	lot specific
Purification:	Affinity purified
Conjugation:	Unconjugated
Storage:	For short term use, store at 2-8°C up to 1 week. For long term storage, store at -20°C in small aliquots to prevent freeze-thaw cycles.
Stability:	Shelf life: one year from despatch.
Predicted Protein Size:	45 kDa
Gene Name:	phosphoglycerate kinase 2
Database Link:	NP_620061.2 Entrez Gene 5232 Human P07205
Background:	This gene is intronless, arose via retrotransposition of the phosphoglycerate kinase 1 gene, and is expressed specifically in the testis. Initially assumed to be a pseudogene, the encoded protein is actually a functional phosphoglycerate kinase that catalyzes the reversible conversion of 1,3-bisphosphoglycerate to 3-phosphoglycerate, during the Embden-Meyerhof-Parnas pathway of glycolysis, in the later stages of spermatogenesis.
Synonyms:	dj417L20.2; PGK-2; PGKB; PGKPS
Protein Families:	Druggable Genome



[View online »](#)

Protein Pathways: Glycolysis / Gluconeogenesis, Metabolic pathways

Product images:



Host: Rabbit
Target Name: PGK2
Sample Tissue: U937 Cell Lysate
Antibody Dilution: 2.0 μ g/ml

Host: Rabbit
Target Name: PGK2
Sample Tissue: Human U937 Whole Cell
Antibody Dilution: 1.0 μ g/ml