

Product datasheet for **TA360176**

PFKFB2 Rabbit Polyclonal Antibody

Product data:

Product Type:	Primary Antibodies
Applications:	WB
Reactivity:	Human
Host:	Rabbit
Clonality:	Polyclonal
Immunogen:	The immunogen is a synthetic peptide directed towards the C terminal region of human PFKFB2
Specificity:	Expected reactivity: Human
Formulation:	Liquid. Purified antibody supplied in 1x PBS buffer with 0.09% (w/v) sodium azide and 2% sucrose. <i>Note that this product is shipped as lyophilized powder to China customers.</i>
Concentration:	lot specific
Purification:	Affinity purified
Conjugation:	Unconjugated
Storage:	For short term use, store at 2-8°C up to 1 week. For long term storage, store at -20°C in small aliquots to prevent freeze-thaw cycles.
Stability:	Shelf life: one year from despatch.
Predicted Protein Size:	58 kDa
Gene Name:	6-phosphofructo-2-kinase/fructose-2,6-biphosphatase 2
Database Link:	NP_001018063.1 Entrez Gene 5208 Human O60825



[View online »](#)

Background:

The protein encoded by this gene is involved in both the synthesis and degradation of fructose-2,6-bisphosphate, a regulatory molecule that controls glycolysis in eukaryotes. The encoded protein has a 6-phosphofructo-2-kinase activity that catalyzes the synthesis of fructose-2,6-bisphosphate, and a fructose-2,6-biphosphatase activity that catalyzes the degradation of fructose-2,6-bisphosphate. This protein regulates fructose-2,6-bisphosphate levels in the heart, while a related enzyme encoded by a different gene regulates fructose-2,6-bisphosphate levels in the liver and muscle. This enzyme functions as a homodimer. Two transcript variants encoding two different isoforms have been found for this gene.

Synonyms:

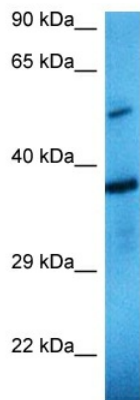
6-phosphofructo-2-kinase/fructose-2,6-biphosphatas; 6-phosphofructo-2-kinase/fructose-2,6-bisphosphata; DKFZp781D2217; MGC138308; MGC138310; PFK-2/FBPase-2

Protein Families:

Druggable Genome

Protein Pathways:

Fructose and mannose metabolism

Product images:

Host: Rabbit
Target Name: F262
Sample Tissue: COLO205 Cell Lysate
Antibody Dilution: 2.0µg/ml

Host: Rabbit
Target Name: PFKFB2
Sample Tissue: Human COLO205 Whole Cell
Antibody Dilution: 1.0ug/ml