

Product datasheet for **TA360174**

PGAM1 Rabbit Polyclonal Antibody

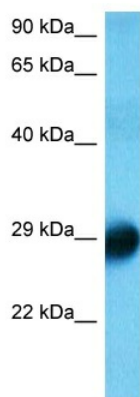
Product data:

Product Type:	Primary Antibodies
Applications:	WB
Reactivity:	Human
Host:	Rabbit
Clonality:	Polyclonal
Immunogen:	The immunogen is a synthetic peptide directed towards the middle region of human PGAM1
Specificity:	Expected reactivity: Human
Formulation:	Liquid. Purified antibody supplied in 1x PBS buffer with 0.09% (w/v) sodium azide and 2% sucrose. <i>Note that this product is shipped as lyophilized powder to China customers.</i>
Concentration:	lot specific
Purification:	Affinity purified
Conjugation:	Unconjugated
Storage:	For short term use, store at 2-8°C up to 1 week. For long term storage, store at -20°C in small aliquots to prevent freeze-thaw cycles.
Stability:	Shelf life: one year from despatch.
Predicted Protein Size:	29 kDa
Gene Name:	phosphoglycerate mutase 1
Database Link:	NP_002620.1 Entrez Gene 5223 Human P18669
Background:	Phosphoglyceric acid mutase (EC 2.7.5.3) is widely distributed in mammalian tissues where it catalyzes the reversible reaction of 3-phosphoglycerate (3-PGA) to 2-phosphoglycerate (2-PGA) in the glycolytic pathway (summary by Chen et al., 1974 [PubMed 4811757]).[supplied by OMIM, Nov 2010]
Synonyms:	PGAM-B; PGAMA
Protein Pathways:	Glycolysis / Gluconeogenesis, Metabolic pathways



[View online »](#)

Product images:



Host: Rabbit
Target Name: PGAM4
Sample Tissue: 293T Cell Lysate
Antibody Dilution: 2.0 μ g/ml

Host: Rabbit
Target Name: PGAM1
Sample Tissue: Human 293T Whole Cell
Antibody Dilution: 1.0 μ g/ml