

Product datasheet for **TA360173**

PDE6 alpha (PDE6A) Rabbit Polyclonal Antibody

Product data:

Product Type:	Primary Antibodies
Applications:	WB
Reactivity:	Human
Host:	Rabbit
Clonality:	Polyclonal
Immunogen:	The immunogen is a synthetic peptide directed towards the middle region of human PDE6A
Specificity:	Expected reactivity: Human
Formulation:	Liquid. Purified antibody supplied in 1x PBS buffer with 0.09% (w/v) sodium azide and 2% sucrose. <i>Note that this product is shipped as lyophilized powder to China customers.</i>
Concentration:	lot specific
Purification:	Affinity purified
Conjugation:	Unconjugated
Storage:	For short term use, store at 2-8°C up to 1 week. For long term storage, store at -20°C in small aliquots to prevent freeze-thaw cycles.
Stability:	Shelf life: one year from despatch.
Predicted Protein Size:	100 kDa
Gene Name:	phosphodiesterase 6A
Database Link:	NP_000431.2 Entrez Gene 5145 Human P16499



[View online »](#)

Background:

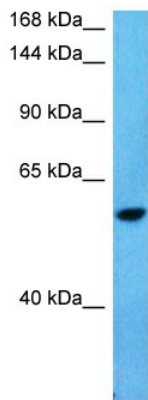
This gene encodes the cyclic-GMP (cGMP)-specific phosphodiesterase 6A alpha subunit, expressed in cells of the retinal rod outer segment. The phosphodiesterase 6 holoenzyme is a heterotrimer composed of an alpha, beta, and two gamma subunits. cGMP is an important regulator of rod cell membrane current, and its dynamic concentration is established by phosphodiesterase 6A cGMP hydrolysis and guanylate cyclase cGMP synthesis. The protein is a subunit of a key phototransduction enzyme and participates in processes of transmission and amplification of the visual signal. Mutations in this gene have been identified as one cause of autosomal recessive retinitis pigmentosa.

Synonyms:

CGPR-A; PDEA; RP43

Protein Families:

Druggable Genome

Product images:

Host: Rabbit
Target Name: PDE6B
Sample Tissue: Jurkat Cell Lysate
Antibody Dilution: 2.0µg/ml

Host: Rabbit
Target Name: PDE6A
Sample Tissue: Human Jurkat Whole Cell
Antibody Dilution: 1.0ug/ml