

## Product datasheet for **TA360172**

### **Pdha1 Rabbit Polyclonal Antibody**

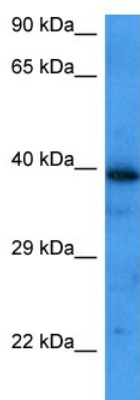
#### **Product data:**

Product Type:	Primary Antibodies
Applications:	WB
Reactivity:	Mouse
Host:	Rabbit
Clonality:	Polyclonal
Immunogen:	The immunogen is a synthetic peptide directed towards the middle region of human PDHA1
Specificity:	<b>Expected reactivity:</b> Mouse
Formulation:	Liquid. Purified antibody supplied in 1x PBS buffer with 0.09% (w/v) sodium azide and 2% sucrose. <i>Note that this product is shipped as lyophilized powder to China customers.</i>
Concentration:	lot specific
Purification:	Affinity purified
Conjugation:	Unconjugated
Storage:	For short term use, store at 2-8°C up to 1 week. For long term storage, store at -20°C in small aliquots to prevent freeze-thaw cycles.
Stability:	Shelf life: one year from despatch.
Predicted Protein Size:	43 kDa
Gene Name:	pyruvate dehydrogenase E1 alpha 1
Database Link:	<a href="#">NP_032836.1</a> <a href="#">Entrez Gene 18597 Mouse</a> <a href="#">P35486</a>
Synonyms:	PDHA; PDHCE1A; PHE1A



[View online »](#)

**Product images:**



Host: Rabbit  
Target Name: Pdha1  
Sample Type: Mouse Pancreas Lysate  
Antibody Dilution: 1.0µg/ml

Host: Rabbit  
Target Name: Pdha1  
Sample Tissue: Mouse Pancreas lysates  
Antibody Dilution: 1.0ug/ml