

Product datasheet for **TA360165**

NPTX1 Rabbit Polyclonal Antibody

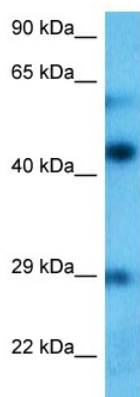
Product data:

Product Type:	Primary Antibodies
Applications:	WB
Reactivity:	Human
Host:	Rabbit
Clonality:	Polyclonal
Immunogen:	The immunogen is a synthetic peptide directed towards the middle region of human NPTX1
Specificity:	Expected reactivity: Human
Formulation:	Liquid. Purified antibody supplied in 1x PBS buffer with 0.09% (w/v) sodium azide and 2% sucrose. <i>Note that this product is shipped as lyophilized powder to China customers.</i>
Concentration:	lot specific
Purification:	Affinity purified
Conjugation:	Unconjugated
Storage:	For short term use, store at 2-8°C up to 1 week. For long term storage, store at -20°C in small aliquots to prevent freeze-thaw cycles.
Stability:	Shelf life: one year from despatch.
Predicted Protein Size:	47 kDa
Gene Name:	neuronal pentraxin 1
Database Link:	NP_002513.2 Entrez Gene 4884 Human Q15818
Background:	NPTX1 is a member of the neuronal pentraxin gene family. Neuronal pentraxin 1 is similar to the rat NP1 gene which encodes a binding protein for the snake venom toxin taipoxin. Human NPTX1 mRNA is exclusively localized to the nervous system.
Synonyms:	DKFZp686J2446; MGC105123; NP-I; NP1
Protein Families:	Secreted Protein



[View online »](#)

Product images:



Host: Rabbit
Target Name: NPTX1
Sample Tissue: 786-0 Cell Lysate
Antibody Dilution: 2.0 μ g/ml

Host: Rabbit
Target Name: NPTX1
Sample Tissue: Human 786-0 Whole Cell
Antibody Dilution: 1.0 μ g/ml