

Product datasheet for **TA360163**

Nociceptin receptor (OPRL1) Rabbit Polyclonal Antibody

Product data:

Product Type:	Primary Antibodies
Applications:	WB
Reactivity:	Human
Host:	Rabbit
Clonality:	Polyclonal
Immunogen:	The immunogen is a synthetic peptide directed towards the C terminal region of human OPRL1
Specificity:	Expected reactivity: Human
Formulation:	Liquid. Purified antibody supplied in 1x PBS buffer with 0.09% (w/v) sodium azide and 2% sucrose. <i>Note that this product is shipped as lyophilized powder to China customers.</i>
Concentration:	lot specific
Purification:	Affinity purified
Conjugation:	Unconjugated
Storage:	For short term use, store at 2-8°C up to 1 week. For long term storage, store at -20°C in small aliquots to prevent freeze-thaw cycles.
Stability:	Shelf life: one year from despatch.
Predicted Protein Size:	41 kDa
Gene Name:	opioid related nociceptin receptor 1
Database Link:	NP_000904.1 Entrez Gene 4987 Human P41146



[View online »](#)

Background:

The protein encoded by this gene is a G protein-coupled receptor whose expression can be induced by phytohemagglutinin. The encoded integral membrane protein is a receptor for the 17 aa neuropeptide nociceptin/orphanin FQ. This gene may be involved in the regulation of numerous brain activities, particularly instinctive and emotional behaviors. A promoter for this gene also functions as a promoter for another gene, regulator of G-protein signalling 19 (RGS19), located on the opposite strand. Three transcript variants encoding the same protein have been found for this gene.

Synonyms:

KOR-3; MGC34578; NOCIR; OOR; ORL1; OTTHUMP00000031642

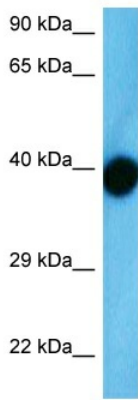
Protein Families:

Druggable Genome, GPCR, Transmembrane

Protein Pathways:

Neuroactive ligand-receptor interaction

Product images:



Host: Rabbit
 Target Name: OPRX
 Sample Tissue: 786-0 Cell Lysate
 Antibody Dilution: 2.0µg/ml

Host: Rabbit
 Target Name: OPRL1
 Sample Tissue: Human 786-0 Whole Cell
 Antibody Dilution: 1.0ug/ml