

Product datasheet for **TA360162**

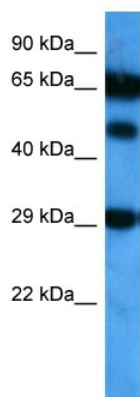
NOVA2 Rabbit Polyclonal Antibody

Product data:

| | |
|-------------------------|---|
| Product Type: | Primary Antibodies |
| Applications: | WB |
| Reactivity: | Human |
| Host: | Rabbit |
| Clonality: | Polyclonal |
| Immunogen: | The immunogen is a synthetic peptide directed towards the middle region of human NOVA2 |
| Specificity: | Expected reactivity: Human |
| Formulation: | Liquid. Purified antibody supplied in 1x PBS buffer with 0.09% (w/v) sodium azide and 2% sucrose. <i>Note that this product is shipped as lyophilized powder to China customers.</i> |
| Concentration: | lot specific |
| Purification: | Affinity purified |
| Conjugation: | Unconjugated |
| Storage: | For short term use, store at 2-8°C up to 1 week. For long term storage, store at -20°C in small aliquots to prevent freeze-thaw cycles. |
| Stability: | Shelf life: one year from despatch. |
| Predicted Protein Size: | 49 kDa |
| Gene Name: | NOVA alternative splicing regulator 2 |
| Database Link: | NP_002507.1 Entrez Gene 4858 Human Q9UNW9 |
| Synonyms: | ANOVA; NOVA3 |



[View online »](#)

Product images:

Host: Rabbit
Target Name: NOVA2
Sample Type: MCF7 Cell Lysate
Antibody Dilution: 1.0 μ g/ml

Host: Rabbit
Target Name: NOVA2
Sample Tissue: Human MCF7 Whole Cell
Antibody Dilution: 1.0 μ g/ml