

## Product datasheet for **TA360160**

### Matrilin 2 (MATN2) Rabbit Polyclonal Antibody

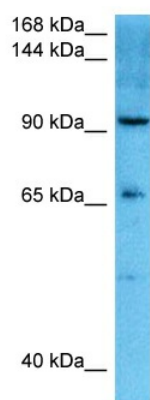
#### Product data:

Product Type:	Primary Antibodies
Applications:	WB
Reactivity:	Human
Host:	Rabbit
Clonality:	Polyclonal
Immunogen:	The immunogen for Anti-MATN2 antibody is a synthetic peptide directed towards the C-terminal region of Human MATN2
Specificity:	<b>Expected reactivity:</b> Human
Formulation:	Liquid. Purified antibody supplied in 1x PBS buffer with 0.09% (w/v) sodium azide and 2% sucrose. <i>Note that this product is shipped as lyophilized powder to China customers.</i>
Concentration:	lot specific
Purification:	Affinity purified
Conjugation:	Unconjugated
Storage:	For short term use, store at 2-8°C up to 1 week. For long term storage, store at -20°C in small aliquots to prevent freeze-thaw cycles.
Stability:	Shelf life: one year from despatch.
Predicted Protein Size:	107 kDa
Gene Name:	matrilin 2
Database Link:	<a href="#">NP_002371.3</a> <a href="#">Entrez Gene 4147 Human</a> <a href="#">O00339</a>
Background:	This gene encodes a member of the von Willebrand factor A domain containing protein family. This family of proteins is thought to be involved in the formation of filamentous networks in the extracellular matrices of various tissues. This protein contains five von Willebrand factor A domains. The specific function of this gene has not yet been determined. Two transcript variants encoding different isoforms have been found for this gene.
Synonyms:	MATN2



[View online »](#)

## Product images:



Host: Rabbit  
Target Name: MATN2  
Sample Tissue: HCT116 Cell Lysate  
Antibody Dilution: 1.0 $\mu$ g/ml

Host: Rabbit  
Target Name: MATN2  
Sample Tissue: Human HCT116 Whole Cell  
Antibody Dilution: 1.0 $\mu$ g/ml