

## Product datasheet for **TA360158**

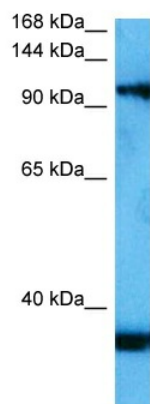
### MAN2A2 Rabbit Polyclonal Antibody

#### Product data:

Product Type:	Primary Antibodies
Applications:	WB
Reactivity:	Human
Host:	Rabbit
Clonality:	Polyclonal
Immunogen:	The immunogen is a synthetic peptide directed towards the N terminal region of human MAN2A2
Specificity:	<b>Expected reactivity:</b> Human
Formulation:	Liquid. Purified antibody supplied in 1x PBS buffer with 0.09% (w/v) sodium azide and 2% sucrose.
Concentration:	lot specific
Purification:	Affinity purified
Conjugation:	Unconjugated
Storage:	For short term use, store at 2-8°C up to 1 week. For long term storage, store at -20°C in small aliquots to prevent freeze-thaw cycles.
Stability:	Shelf life: one year from despatch.
Predicted Protein Size:	129 kDa
Gene Name:	mannosidase alpha class 2A member 2
Database Link:	<a href="#">NP_006113.2</a> <a href="#">Entrez Gene 4122 Human</a> <a href="#">P49641</a>
Synonyms:	HsT19662; MANA2X
Protein Families:	Druggable Genome, Transmembrane
Protein Pathways:	Metabolic pathways, N-Glycan biosynthesis



[View online »](#)

**Product images:**

Host: Rabbit  
Target Name: MA2A2  
Sample Tissue: HeLa Cell Lysate  
Antibody Dilution: 1.0 $\mu$ g/ml

Host: Rabbit  
Target Name: MAN2A2  
Sample Tissue: Human HeLa Whole Cell  
Antibody Dilution: 1.0 $\mu$ g/ml