

## Product datasheet for **TA360152**

### RP105 (CD180) Rabbit Polyclonal Antibody

#### Product data:

Product Type:	Primary Antibodies
Applications:	WB
Reactivity:	Human
Host:	Rabbit
Clonality:	Polyclonal
Immunogen:	The immunogen is a synthetic peptide directed towards the C terminal region of human CD180
Specificity:	<b>Expected reactivity:</b> Human
Formulation:	Liquid. Purified antibody supplied in 1x PBS buffer with 0.09% (w/v) sodium azide and 2% sucrose. <i>Note that this product is shipped as lyophilized powder to China customers.</i>
Concentration:	lot specific
Purification:	Affinity purified
Conjugation:	Unconjugated
Storage:	For short term use, store at 2-8°C up to 1 week. For long term storage, store at -20°C in small aliquots to prevent freeze-thaw cycles.
Stability:	Shelf life: one year from despatch.
Predicted Protein Size:	74 kDa
Gene Name:	CD180 molecule
Database Link:	<a href="#">NP_005573.2</a> <a href="#">Entrez Gene 4064 Human</a> <a href="#">Q99467</a>
Background:	CD180 is a cell surface molecule consisting of extracellular leucine-rich repeats (LRR) and a short cytoplasmic tail. The extracellular LRR is associated with a molecule called MD-1 and form the cell surface receptor complex, RP105/MD-1. It belongs to the family of pathogen receptors, Toll-like receptors (TLR). RP105/MD1, by working in concert with TLR4, controls B cell recognition and signaling of lipopolysaccharide (LPS), a membrane constituent of Gram-negative bacteria.

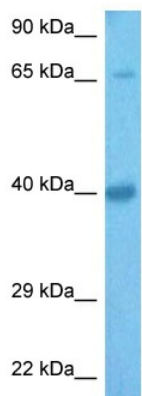


[View online »](#)

Synonyms: LY64; Ly78; MGC126233; MGC126234; RP105

Protein Families: Druggable Genome, Transmembrane

### Product images:



Host: Rabbit  
Target Name: CD180  
Sample Tissue: COLO205 Cell Lysate  
Antibody Dilution: 2.0 $\mu$ g/ml

Host: Rabbit  
Target Name: CD180  
Sample Tissue: Human COLO205 Whole Cell  
Antibody Dilution: 1.0 $\mu$ g/ml