

Product datasheet for **TA360148**

Galectin 2 (LGALS2) Rabbit Polyclonal Antibody

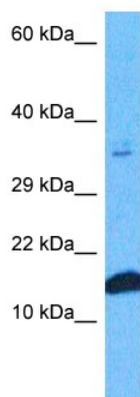
Product data:

Product Type:	Primary Antibodies
Applications:	WB
Reactivity:	Human
Host:	Rabbit
Clonality:	Polyclonal
Immunogen:	The immunogen is a synthetic peptide directed towards the middle region of human LGALS2
Specificity:	Expected reactivity: Human
Formulation:	Liquid. Purified antibody supplied in 1x PBS buffer with 0.09% (w/v) sodium azide and 2% sucrose. <i>Note that this product is shipped as lyophilized powder to China customers.</i>
Concentration:	lot specific
Purification:	Affinity purified
Conjugation:	Unconjugated
Storage:	For short term use, store at 2-8°C up to 1 week. For long term storage, store at -20°C in small aliquots to prevent freeze-thaw cycles.
Stability:	Shelf life: one year from despatch.
Predicted Protein Size:	15 kDa
Gene Name:	galectin 2
Database Link:	NP_006489.1 Entrez Gene 3957 Human P05162
Background:	The protein encoded by this gene is a soluble beta-galactoside binding lectin. The encoded protein is found as a homodimer and can bind to lymphotoxin-alpha. A single nucleotide polymorphism in an intron of this gene can alter the transcriptional level of the protein, with a resultant increased risk of myocardial infarction.
Synonyms:	HL14; MGC75071



[View online »](#)

Product images:



Host: Rabbit
Target Name: LEG2
Sample Tissue: Fetal Lung Lysate
Antibody Dilution: 1.0 μ g/ml

Host: Rabbit
Target Name: LGALS2
Sample Tissue: Human Fetal Lung
Antibody Dilution: 1.0 μ g/ml