

## Product datasheet for **TA360146**

### FADS1 Rabbit Polyclonal Antibody

#### Product data:

Product Type:	Primary Antibodies
Applications:	WB
Reactivity:	Human
Host:	Rabbit
Clonality:	Polyclonal
Immunogen:	The immunogen is a synthetic peptide directed towards the middle region of human FADS1
Specificity:	<b>Expected reactivity:</b> Human
Formulation:	Liquid. Purified antibody supplied in 1x PBS buffer with 0.09% (w/v) sodium azide and 2% sucrose. <i>Note that this product is shipped as lyophilized powder to China customers.</i>
Concentration:	lot specific
Purification:	Affinity purified
Conjugation:	Unconjugated
Storage:	For short term use, store at 2-8°C up to 1 week. For long term storage, store at -20°C in small aliquots to prevent freeze-thaw cycles.
Stability:	Shelf life: one year from despatch.
Predicted Protein Size:	52 kDa
Gene Name:	fatty acid desaturase 1
Database Link:	<a href="#">NP_037534.3</a> <a href="#">Entrez Gene 3992 Human</a> <a href="#">O60427</a>



[View online »](#)

**Background:**

The protein encoded by this gene is a member of the fatty acid desaturase (FADS) gene family. Desaturase enzymes regulate unsaturation of fatty acids through the introduction of double bonds between defined carbons of the fatty acyl chain. FADS family members are considered fusion products composed of an N-terminal cytochrome b5-like domain and a C-terminal multiple membrane-spanning desaturase portion, both of which are characterized by conserved histidine motifs. This gene is clustered with family members FADS1 and FADS2 at 11q12-q13.1; this cluster is thought to have arisen evolutionarily from gene duplication based on its similar exon/intron organization.

**Synonyms:**

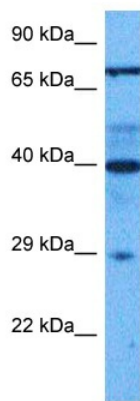
D5D; FADS6; FADSD5; FLJ38956; FLJ90273; LLCDL1; TU12

**Protein Families:**

Transcription Factors, Transmembrane

**Protein Pathways:**

Biosynthesis of unsaturated fatty acids

**Product images:**

Host: Rabbit  
Target Name: FADS1  
Sample Tissue: 786-0 Cell Lysate  
Antibody Dilution: 1.0µg/ml

Host: Rabbit  
Target Name: FADS1  
Sample Tissue: Human 786-0 Whole Cell  
Antibody Dilution: 1.0ug/ml