

## Product datasheet for **TA360145**

### ABLIM1 Rabbit Polyclonal Antibody

#### Product data:

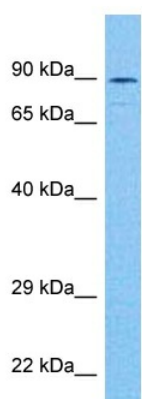
Product Type:	Primary Antibodies
Applications:	WB
Reactivity:	Human
Host:	Rabbit
Clonality:	Polyclonal
Immunogen:	The immunogen is a synthetic peptide directed towards the middle region of human ABLIM1
Specificity:	<b>Expected reactivity:</b> Human
Formulation:	Liquid. Purified antibody supplied in 1x PBS buffer with 0.09% (w/v) sodium azide and 2% sucrose. <i>Note that this product is shipped as lyophilized powder to China customers.</i>
Concentration:	lot specific
Purification:	Affinity purified
Conjugation:	Unconjugated
Storage:	For short term use, store at 2-8°C up to 1 week. For long term storage, store at -20°C in small aliquots to prevent freeze-thaw cycles.
Stability:	Shelf life: one year from despatch.
Predicted Protein Size:	88 kDa
Gene Name:	actin binding LIM protein 1
Database Link:	<a href="#">NP_001003407.1</a> <a href="#">Entrez Gene 3983 Human</a> <a href="#">O14639</a>
Background:	This gene encodes a cytoskeletal LIM protein that binds to actin filaments via a domain that is homologous to erythrocyte dematin. LIM domains, found in over 60 proteins, play key roles in the regulation of developmental pathways. LIM domains also function as protein-binding interfaces, mediating specific protein-protein interactions. The protein encoded by this gene could mediate such interactions between actin filaments and cytoplasmic targets. Alternatively spliced transcript variants encoding different isoforms have been identified.
Synonyms:	ABLIM; abLIM-1; DKFzp781D0148; FLJ14564; KIAA0059; LIMAB1; LIMATIN; MGC1224



[View online »](#)

Protein Pathways: Axon guidance

### Product images:



Host: Rabbit  
Target Name: ABLM1  
Sample Tissue: Stomach Tumor Lysate  
Antibody Dilution: 1.0 $\mu$ g/ml

Host: Rabbit  
Target Name: ABLM1  
Sample Tissue: Human Stomach Tumor  
Antibody Dilution: 1.0 $\mu$ g/ml