

## Product datasheet for **TA360143**

### Plastin L (LCP1) Rabbit Polyclonal Antibody

#### Product data:

Product Type:	Primary Antibodies
Applications:	WB
Reactivity:	Human
Host:	Rabbit
Clonality:	Polyclonal
Immunogen:	The immunogen for Anti-LCP1 antibody is: synthetic peptide directed towards the C-terminal region of Human PLSL
Specificity:	<b>Expected reactivity:</b> Human
Formulation:	Liquid. Purified antibody supplied in 1x PBS buffer with 0.09% (w/v) sodium azide and 2% sucrose. <i>Note that this product is shipped as lyophilized powder to China customers.</i>
Concentration:	lot specific
Purification:	Affinity purified
Conjugation:	Unconjugated
Storage:	For short term use, store at 2-8°C up to 1 week. For long term storage, store at -20°C in small aliquots to prevent freeze-thaw cycles.
Stability:	Shelf life: one year from despatch.
Predicted Protein Size:	68 kDa
Gene Name:	lymphocyte cytosolic protein 1
Database Link:	<a href="#">XP_005266431.1</a> <a href="#">Entrez Gene 3936 Human</a> <a href="#">P13796</a>



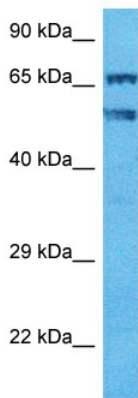
[View online »](#)

**Background:**

Plastins are a family of actin-binding proteins that are conserved throughout eukaryote evolution and expressed in most tissues of higher eukaryotes. In humans, two ubiquitous plastin isoforms (L and T) have been identified. Plastin 1 (otherwise known as Fimbrin) is a third distinct plastin isoform which is specifically expressed at high levels in the small intestine. The L isoform is expressed only in hemopoietic cell lineages, while the T isoform has been found in all other normal cells of solid tissues that have replicative potential (fibroblasts, endothelial cells, epithelial cells, melanocytes, etc.). However, L-plastin has been found in many types of malignant human cells of non-hemopoietic origin suggesting that its expression is induced accompanying tumorigenesis in solid tissues.

**Synonyms:**

CP64; DKFZp781A23186; FLJ25423; FLJ26114; FLJ39956; L-PLASTIN; LC64P; LCP-1; LPL; OTTHUMP00000018362; PLS2

**Product images:**

Host: Rabbit  
Target Name: PLSL  
Sample Tissue: Jurkat Cell Lysate  
Antibody Dilution: 1.0µg/ml

WB Suggested Anti-PLSL antibody Titration: 1 ug/mL  
Sample Type: Human Jurkat Whole Cell