

Product datasheet for **TA360139**

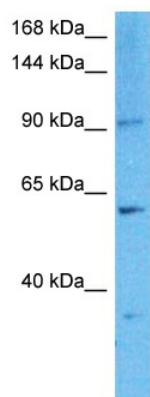
KCNQ2 Rabbit Polyclonal Antibody

Product data:

Product Type:	Primary Antibodies
Applications:	WB
Reactivity:	Human
Host:	Rabbit
Clonality:	Polyclonal
Immunogen:	The immunogen is a synthetic peptide directed towards the middle region of Human KCNQ2
Specificity:	Expected reactivity: Human
Formulation:	Liquid. Purified antibody supplied in 1x PBS buffer with 0.09% (w/v) sodium azide and 2% sucrose.
Concentration:	lot specific
Purification:	Affinity purified
Conjugation:	Unconjugated
Storage:	For short term use, store at 2-8°C up to 1 week. For long term storage, store at -20°C in small aliquots to prevent freeze-thaw cycles.
Stability:	Shelf life: one year from despatch.
Predicted Protein Size:	95 kDa
Gene Name:	potassium voltage-gated channel subfamily Q member 2
Database Link:	Entrez Gene 3785 Human O43526
Background:	The M channel is a slowly activating and deactivating potassium channel that plays a critical role in the regulation of neuronal excitability. The M channel is formed by the association of the protein encoded by this gene and a related protein encoded by the KCNQ3 gene, both integral membrane proteins. M channel currents are inhibited by M1 muscarinic acetylcholine receptors and activated by retigabine, a novel anti-convulsant drug. Defects in this gene are a cause of benign familial neonatal convulsions type 1 (BFNC), also known as epilepsy, benign neonatal type 1 (EBN1). At least five transcript variants encoding five different isoforms have been found for this gene.
Synonyms:	BFNC; EBN; EBN1; ENB1; HNSPC; KCNA11; KV7.2; KVEBN1



[View online »](#)

Product images:

Host: Rabbit
Target Name: KCNQ2
Sample Tissue: 293T Cell Lysate
Antibody Dilution: 1.0 μ g/ml

WB Suggested Anti-KCNQ2 antibody Titration: 1
ug/mL
Sample Type: Human 293T Whole Cell