

Product datasheet for **TA360131**

Integrin alpha 3 (ITGA3) Rabbit Polyclonal Antibody

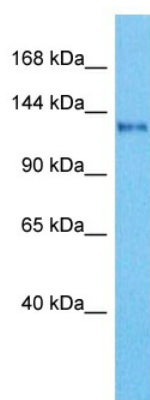
Product data:

Product Type:	Primary Antibodies
Applications:	WB
Reactivity:	Human
Host:	Rabbit
Clonality:	Polyclonal
Immunogen:	The immunogen for Anti-ITGA3 antibody is: synthetic peptide directed towards the C-terminal region of Human ITA3
Specificity:	Expected reactivity: Human
Formulation:	Liquid. Purified antibody supplied in 1x PBS buffer with 0.09% (w/v) sodium azide and 2% sucrose.
Concentration:	lot specific
Purification:	Affinity purified
Conjugation:	Unconjugated
Storage:	For short term use, store at 2-8°C up to 1 week. For long term storage, store at -20°C in small aliquots to prevent freeze-thaw cycles.
Stability:	Shelf life: one year from despatch.
Predicted Protein Size:	115 kDa
Gene Name:	integrin subunit alpha 3
Database Link:	Entrez Gene 3675 Human P26006
Background:	The protein encoded by this gene belongs to the family of integrins. Integrins are heterodimeric integral membrane proteins composed of an alpha chain and a beta chain, and function as cell surface adhesion molecules. This gene encodes alpha 3 subunit, which undergoes post-translational cleavage in the extracellular domain to yield disulfide-linked light and heavy chains that join with beta 1 subunit to form an integrin that interacts with many extracellular-matrix proteins. Alternatively spliced transcript variants encoding different isoforms have been identified for this gene.
Synonyms:	CD49C; FLJ34631; FLJ34704; FRP-2; GAP-B3; GAPB3; MSK18; VCA-2; VL3A; VLA3a



[View online »](#)

Product images:



Host: Rabbit
Target Name: ITA3
Sample Tissue: HepG2 Cell Lysate
Antibody Dilution: 1.0 μ g/ml

WB Suggested Anti-ITA3 antibody Titration: 1
ug/mL
Sample Type: Human HepG2 Whole Cell