

Product datasheet for **TA360130**

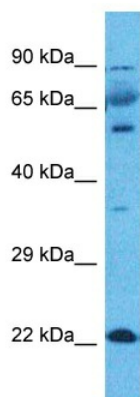
IFNA7 Rabbit Polyclonal Antibody

Product data:

Product Type:	Primary Antibodies
Applications:	WB
Reactivity:	Human
Host:	Rabbit
Clonality:	Polyclonal
Immunogen:	The immunogen is a synthetic peptide directed towards the N-terminal region of Human IFNA7
Specificity:	Expected reactivity: Human
Formulation:	Liquid. Purified antibody supplied in 1x PBS buffer with 0.09% (w/v) sodium azide and 2% sucrose. <i>Note that this product is shipped as lyophilized powder to China customers.</i>
Concentration:	lot specific
Purification:	Affinity purified
Conjugation:	Unconjugated
Storage:	For short term use, store at 2-8°C up to 1 week. For long term storage, store at -20°C in small aliquots to prevent freeze-thaw cycles.
Stability:	Shelf life: one year from despatch.
Predicted Protein Size:	20 kDa
Gene Name:	interferon, alpha 7
Database Link:	NP_066401.2 Entrez Gene 3444 Human P01567
Background:	IFNA7 is produced by macrophages, IFN-alpha have antiviral activities. It interferon stimulates the production of two enzymes: a protein kinase and an oligoadenylate synthetase.
Synonyms:	IFN-alpha-J1; IFNA-J



[View online »](#)

Product images:

Host: Rabbit
Target Name: IFNA7
Sample Tissue: Fetal Lung Lysate
Antibody Dilution: 1.0 μ g/ml

WB Suggested Anti-IFNA7 antibody Titration: 1
ug/mL
Sample Type: Human Fetal Lung