

## Product datasheet for **TA360127**

### IFNA5 Rabbit Polyclonal Antibody

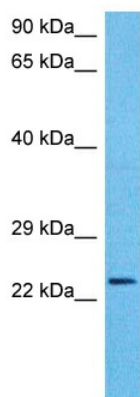
#### Product data:

Product Type:	Primary Antibodies
Applications:	WB
Reactivity:	Human
Host:	Rabbit
Clonality:	Polyclonal
Immunogen:	The immunogen is a synthetic peptide directed towards the N-terminal region of Human IFNA5
Specificity:	<b>Expected reactivity:</b> Human
Formulation:	Liquid. Purified antibody supplied in 1x PBS buffer with 0.09% (w/v) sodium azide and 2% sucrose. <i>Note that this product is shipped as lyophilized powder to China customers.</i>
Concentration:	lot specific
Purification:	Affinity purified
Conjugation:	Unconjugated
Storage:	For short term use, store at 2-8°C up to 1 week. For long term storage, store at -20°C in small aliquots to prevent freeze-thaw cycles.
Stability:	Shelf life: one year from despatch.
Predicted Protein Size:	20 kDa
Gene Name:	interferon alpha 5
Database Link:	<a href="#">NP_002160.1</a> <a href="#">Entrez Gene 3442 Human P01569</a>
Background:	IFNA5 is produced by macrophages, IFN-alpha have antiviral activities. It interferon stimulates the production of two enzymes: a protein kinase and an oligoadenylate synthetase.
Synonyms:	INFA5



[View online »](#)

## Product images:



Host: Rabbit  
Target Name: IFNA5  
Sample Tissue: 293T Cell Lysate  
Antibody Dilution: 1.0 $\mu$ g/ml

WB Suggested Anti-IFNA5 antibody Titration: 1  
ug/mL  
Sample Type: Human 293T Whole Cell