

Product datasheet for **TA360116**

GUCY1A1 Rabbit Polyclonal Antibody

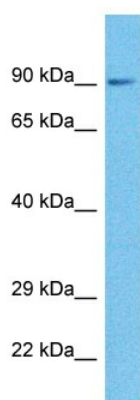
Product data:

Product Type:	Primary Antibodies
Applications:	WB
Reactivity:	Human
Host:	Rabbit
Clonality:	Polyclonal
Immunogen:	The immunogen is a synthetic peptide directed towards the C-terminal region of Human GCYA3
Specificity:	Expected reactivity: Human
Formulation:	Liquid. Purified antibody supplied in 1x PBS buffer with 0.09% (w/v) sodium azide and 2% sucrose. <i>Note that this product is shipped as lyophilized powder to China customers.</i>
Concentration:	lot specific
Purification:	Affinity purified
Conjugation:	Unconjugated
Storage:	For short term use, store at 2-8°C up to 1 week. For long term storage, store at -20°C in small aliquots to prevent freeze-thaw cycles.
Stability:	Shelf life: one year from despatch.
Predicted Protein Size:	77kDa
Gene Name:	guanylate cyclase 1, soluble, alpha 3
Database Link:	XP_006714260 Entrez Gene 2982 Human Q02108
Background:	Soluble guanylate cyclases are heterodimeric proteins that catalyze the conversion of GTP to 3',5'-cyclic GMP and pyrophosphate. The protein encoded by this gene is an alpha subunit of this complex and it interacts with a beta subunit to form the guanylate cyclase enzyme, which is activated by nitric oxide. Several transcript variants encoding a few different isoforms have been found for this gene.
Synonyms:	GC-S-alpha-1; GC-SA3; GCS-alpha-1; GCS-alpha-3; GUC1A3; GUCA3; GUCSA3; GUCY1A1



[View online »](#)

Product images:



Host: Rabbit
Target Name: GCYA3
Sample Tissue: HCT116 Cell Lysate
Antibody Dilution: 1.0 μ g/ml

Host: Rabbit
Target Name: GCYA3
Sample Type: HCT116 Whole Cell lysates
Antibody Dilution: 1.0ug/ml