

Product datasheet for **TA360106**

GPS2 Rabbit Polyclonal Antibody

Product data:

| | |
|-------------------------|-----------------------------------------------------------------------------------------------------------------------------------------------------------------------------------------|
| Product Type: | Primary Antibodies |
| Applications: | WB |
| Reactivity: | Human |
| Host: | Rabbit |
| Clonality: | Polyclonal |
| Immunogen: | The immunogen is a synthetic peptide directed towards the C-terminal region of Human GPS2 |
| Specificity: | Expected reactivity: Human |
| Formulation: | Liquid. Purified antibody supplied in 1x PBS buffer with 0.09% (w/v) sodium azide and 2% sucrose. <i>Note that this product is shipped as lyophilized powder to China customers.</i> |
| Concentration: | lot specific |
| Purification: | Affinity purified |
| Conjugation: | Unconjugated |
| Storage: | For short term use, store at 2-8°C up to 1 week. For long term storage, store at -20°C in small aliquots to prevent freeze-thaw cycles. |
| Stability: | Shelf life: one year from despatch. |
| Predicted Protein Size: | 35kDa |
| Gene Name: | G protein pathway suppressor 2 |
| Database Link: | NP_004480 Entrez Gene 2874 Human Q13227 |



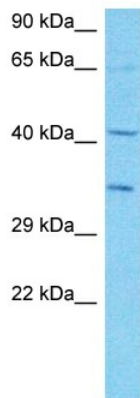
[View online »](#)

Background:

This gene encodes a protein involved in G protein-mitogen-activated protein kinase (MAPK) signaling cascades. When overexpressed in mammalian cells, this gene could potentially suppress a RAS- and MAPK-mediated signal and interfere with JNK activity, suggesting that the function of this gene may be signal repression. The encoded protein is an integral subunit of the NCOR1-HDAC3 (nuclear receptor corepressor 1-histone deacetylase 3) complex, and it was shown that the complex inhibits JNK activation through this subunit and thus could potentially provide an alternative mechanism for hormone-mediated antagonism of AP1 (activator protein 1) function.

Synonyms:

AMF-1; MGC104294; MGC119287; MGC119288; MGC119289; OTTHUMP00000128385; OTTHUMP00000163158

Product images:

Host: Rabbit
Target Name: GPS2
Sample Tissue: HCT116 Cell Lysate
Antibody Dilution: 1.0µg/ml

Host: Rabbit
Target Name: GPS2
Sample Type: HCT116 Whole Cell lysates
Antibody Dilution: 1.0ug/ml