

Product datasheet for **TA360103**

GABA A Receptor beta 2 (GABRB2) Rabbit Polyclonal Antibody

Product data:

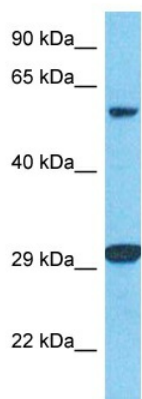
Product Type:	Primary Antibodies
Applications:	WB
Reactivity:	Human
Host:	Rabbit
Clonality:	Polyclonal
Immunogen:	The immunogen is a synthetic peptide directed towards the N-terminal region of Human GBRB2
Specificity:	Expected reactivity: Human
Formulation:	Liquid. Purified antibody supplied in 1x PBS buffer with 0.09% (w/v) sodium azide and 2% sucrose. <i>Note that this product is shipped as lyophilized powder to China customers.</i>
Concentration:	lot specific
Purification:	Affinity purified
Conjugation:	Unconjugated
Storage:	For short term use, store at 2-8°C up to 1 week. For long term storage, store at -20°C in small aliquots to prevent freeze-thaw cycles.
Stability:	Shelf life: one year from despatch.
Predicted Protein Size:	56kDa
Gene Name:	gamma-aminobutyric acid type A receptor beta2 subunit
Database Link:	NP_068711 Entrez Gene 2561 Human P47870
Background:	The gamma-aminobutyric acid (GABA) A receptor is a multisubunit chloride channel that mediates the fastest inhibitory synaptic transmission in the central nervous system. This gene encodes GABA A receptor, beta 2 subunit. It is mapped to chromosome 5q34 in a cluster comprised of genes encoding alpha 1 and gamma 2 subunits of the GABA A receptor. Alternative splicing of this gene generates 2 transcript variants, differing by a 114 bp insertion.



[View online »](#)

Synonyms: MGC119386; MGC119388; MGC119389; OTTHUMP00000160872

Product images:



Host: Rabbit
 Target Name: GBRB2
 Sample Tissue: 293T Cell Lysate
 Antibody Dilution: 1.0µg/ml

Host: Rabbit
 Target Name: GBRB2
 Sample Type: 293T Whole Cell lysates
 Antibody Dilution: 1.0ug/ml