

## Product datasheet for **TA360094**

### FGR Rabbit Polyclonal Antibody

#### Product data:

Product Type:	Primary Antibodies
Applications:	WB
Reactivity:	Human
Host:	Rabbit
Clonality:	Polyclonal
Immunogen:	The immunogen is a synthetic peptide directed towards the N terminal region of human FGR
Specificity:	<b>Expected reactivity:</b> Human
Formulation:	Liquid. Purified antibody supplied in 1x PBS buffer with 0.09% (w/v) sodium azide and 2% sucrose. <i>Note that this product is shipped as lyophilized powder to China customers.</i>
Concentration:	lot specific
Purification:	Affinity purified
Conjugation:	Unconjugated
Storage:	For short term use, store at 2-8°C up to 1 week. For long term storage, store at -20°C in small aliquots to prevent freeze-thaw cycles.
Stability:	Shelf life: one year from despatch.
Predicted Protein Size:	59 kDa
Gene Name:	FGR proto-oncogene, Src family tyrosine kinase
Database Link:	<a href="#">NP_001036194.1</a> <a href="#">Entrez Gene 2268 Human</a> <a href="#">P09769</a>



[View online »](#)

**Background:**

This gene is a member of the Src family of protein tyrosine kinases (PTKs). The encoded protein contains N-terminal sites for myristylation and palmitoylation, a PTK domain, and SH2 and SH3 domains which are involved in mediating protein-protein interactions with phosphotyrosine-containing and proline-rich motifs, respectively. The protein localizes to plasma membrane ruffles, and functions as a negative regulator of cell migration and adhesion triggered by the beta-2 integrin signal transduction pathway. Infection with Epstein-Barr virus results in the overexpression of this gene. Multiple alternatively spliced variants, encoding the same protein, have been identified.

**Synonyms:**

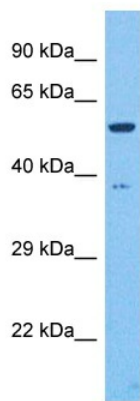
c-fgr; c-src2; FLJ43153; MGC75096; OTTHUMP00000003603; P55-FGR; p55c-fgr; p58c-fgr; SRC2

**Protein Families:**

Druggable Genome, Protein Kinase

**Protein Pathways:**

Chemokine signaling pathway

**Product images:**

Host: Rabbit  
Target Name: FGR  
Sample Type: Jurkat Whole Cell Lysate  
Antibody Dilution: 1.0µg/ml

Host: Rabbit  
Target Name: FGR  
Sample Tissue: Human Jurkat Whole Cell  
Antibody Dilution: 1.0ug/ml