

## Product datasheet for **TA360085**

### Eph receptor B1 (EPHB1) Rabbit Polyclonal Antibody

#### Product data:

Product Type:	Primary Antibodies
Applications:	WB
Reactivity:	Human
Host:	Rabbit
Clonality:	Polyclonal
Immunogen:	The immunogen is a synthetic peptide directed towards the middle region of human EPHB1
Specificity:	<b>Expected reactivity:</b> Human
Formulation:	Liquid. Purified antibody supplied in 1x PBS buffer with 0.09% (w/v) sodium azide and 2% sucrose. <i>Note that this product is shipped as lyophilized powder to China customers.</i>
Concentration:	lot specific
Purification:	Affinity purified
Conjugation:	Unconjugated
Storage:	For short term use, store at 2-8°C up to 1 week. For long term storage, store at -20°C in small aliquots to prevent freeze-thaw cycles.
Stability:	Shelf life: one year from despatch.
Predicted Protein Size:	108 kDa
Gene Name:	EPH receptor B1
Database Link:	<a href="#">NP_004432.1</a> <a href="#">Entrez Gene 2047 Human</a> <a href="#">P54762</a>



[View online »](#)

**Background:**

Ephrin receptors and their ligands, the ephrins, mediate numerous developmental processes, particularly in the nervous system. Based on their structures and sequence relationships, ephrins are divided into the ephrin-A (EFNA) class, which are anchored to the membrane by a glycosylphosphatidylinositol linkage, and the ephrin-B (EFNB) class, which are transmembrane proteins. The Eph family of receptors are divided into 2 groups based on the similarity of their extracellular domain sequences and their affinities for binding ephrin-A and ephrin-B ligands. Ephrin receptors make up the largest subgroup of the receptor tyrosine kinase (RTK) family. The protein encoded by this gene is a receptor for ephrin-B family members.

**Synonyms:**

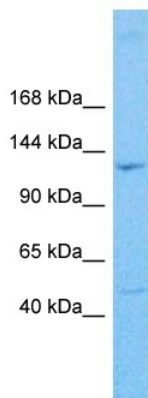
ELK; EPHT2; FLJ37986; Hek6; NET

**Protein Families:**

Druggable Genome, Protein Kinase, Transmembrane

**Protein Pathways:**

Axon guidance

**Product images:**

Host: Rabbit  
Target Name: EPHB1  
Sample Type: PANC1 Cell Lysate  
Antibody Dilution: 1.0µg/ml

Host: Rabbit  
Target Name: EPHB1  
Sample Tissue: PANC1 Whole Cell lysates  
Antibody Dilution: 1.0ug/ml