

Product datasheet for **TA360074**

Ephrin B2 (EFNB2) Rabbit Polyclonal Antibody

Product data:

Product Type:	Primary Antibodies
Applications:	WB
Reactivity:	Human
Host:	Rabbit
Clonality:	Polyclonal
Immunogen:	The immunogen is a synthetic peptide directed towards the middle region of human EFNB2
Specificity:	Expected reactivity: Human
Formulation:	Liquid. Purified antibody supplied in 1x PBS buffer with 0.09% (w/v) sodium azide and 2% sucrose. <i>Note that this product is shipped as lyophilized powder to China customers.</i>
Concentration:	lot specific
Purification:	Affinity purified
Conjugation:	Unconjugated
Storage:	For short term use, store at 2-8°C up to 1 week. For long term storage, store at -20°C in small aliquots to prevent freeze-thaw cycles.
Stability:	Shelf life: one year from despatch.
Predicted Protein Size:	36 kDa
Gene Name:	ephrin B2
Database Link:	NP_004084.1 Entrez Gene 1948 Human P52799



[View online »](#)

Background:

This gene encodes a member of the ephrin (EPH) family. The ephrins and EPH-related receptors comprise the largest subfamily of receptor protein-tyrosine kinases and have been implicated in mediating developmental events, especially in the nervous system and in erythropoiesis. Based on their structures and sequence relationships, ephrins are divided into the ephrin-A (EFNA) class, which are anchored to the membrane by a glycosylphosphatidylinositol linkage, and the ephrin-B (EFNB) class, which are transmembrane proteins. This gene encodes an EFNB class ephrin which binds to the EPHB4 and EPHA3 receptors.

Synonyms:

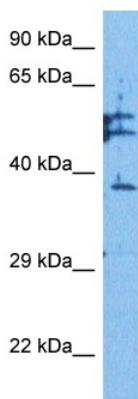
ephrin-B2; EPLG5; HTK-L; HTKL; LERK-5; LERK5; MGC126226; MGC126227; MGC126228

Protein Families:

Druggable Genome, Transmembrane

Protein Pathways:

Axon guidance

Product images:

Host: Rabbit
Target Name: EFNB2
Sample Type: PRPMI 8226 Cell Lysate
Antibody Dilution: 1.0µg/ml

Host: Rabbit
Target Name: EFNB2
Sample Tissue: PRPMI 8226 Whole cell lysates
Antibody Dilution: 1.0ug/ml