

## Product datasheet for **TA360065**

### Epiphycan (EPYC) Rabbit Polyclonal Antibody

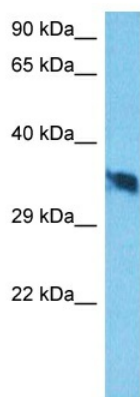
#### Product data:

Product Type:	Primary Antibodies
Applications:	WB
Reactivity:	Human
Host:	Rabbit
Clonality:	Polyclonal
Immunogen:	The immunogen is a synthetic peptide directed towards the N-terminal region of Human EPYC
Specificity:	<b>Expected reactivity:</b> Human
Formulation:	Liquid. Purified antibody supplied in 1x PBS buffer with 0.09% (w/v) sodium azide and 2% sucrose.
Concentration:	lot specific
Purification:	Affinity purified
Conjugation:	Unconjugated
Storage:	For short term use, store at 2-8°C up to 1 week. For long term storage, store at -20°C in small aliquots to prevent freeze-thaw cycles.
Stability:	Shelf life: one year from despatch.
Predicted Protein Size:	35kDa
Gene Name:	epiphycan
Database Link:	<a href="#">NP_004941</a> <a href="#">Entrez Gene 1833 Human</a> <a href="#">Q99645</a>
Background:	Dermatan sulfate proteoglycan 3 is a member of the small leucine-rich repeat proteoglycan family. This gene is composed of seven exons. It regulates fibrillogenesis by interacting with collagen fibrils and other extracellular matrix proteins.
Synonyms:	DSPG3; epiphycan; Pg-Lb; PGLB; proteoglycan-lb; SLRR3B



[View online »](#)

## Product images:



Host: Rabbit  
Target Name: EPYC  
Sample Tissue: Jurkat Cell Lysate  
Antibody Dilution: 1.0 $\mu$ g/ml

Host: Rabbit  
Target Name: EPYC  
Sample Type: Jurkat Whole Cell lysates  
Antibody Dilution: 1.0ug/ml