

Product datasheet for **TA360051**

Casein Kinase 1 delta (CSNK1D) Rabbit Polyclonal Antibody

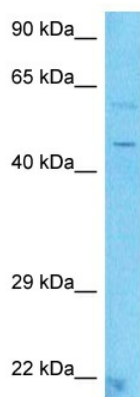
Product data:

Product Type:	Primary Antibodies
Applications:	WB
Reactivity:	Human
Host:	Rabbit
Clonality:	Polyclonal
Immunogen:	The immunogen is a synthetic peptide directed towards the C-terminal region of Human KC1D
Specificity:	Expected reactivity: Human
Formulation:	Liquid. Purified antibody supplied in 1x PBS buffer with 0.09% (w/v) sodium azide and 2% sucrose. <i>Note that this product is shipped as lyophilized powder to China customers.</i>
Concentration:	lot specific
Purification:	Affinity purified
Conjugation:	Unconjugated
Storage:	For short term use, store at 2-8°C up to 1 week. For long term storage, store at -20°C in small aliquots to prevent freeze-thaw cycles.
Stability:	Shelf life: one year from despatch.
Predicted Protein Size:	45kDa
Gene Name:	casein kinase 1 delta
Database Link:	Entrez Gene 1453 Human P48730
Background:	This gene is a member of the casein kinase I (CKI) gene family whose members have been implicated in the control of cytoplasmic and nuclear processes, including DNA replication and repair. The encoded protein may also be involved in the regulation of apoptosis, circadian rhythm, microtubule dynamics, chromosome segregation, and p53-mediated effects on growth. The encoded protein is highly similar to the mouse and rat CK1 delta homologs. Three transcript variants encoding different isoforms have been found for this gene.
Synonyms:	CKI-delta; CKId; HCKID



[View online »](#)

Product images:



Host: Rabbit
Target Name: KC1D
Sample Tissue: Jurkat Cell Lysate
Antibody Dilution: 1.0µg/ml

Host: Rabbit
Target Name: KC1D
Sample Type: Jurkat Whole Cell lysates
Antibody Dilution: 1.0ug/ml