

Product datasheet for **TA360049**

Calponin (CNN1) Rabbit Polyclonal Antibody

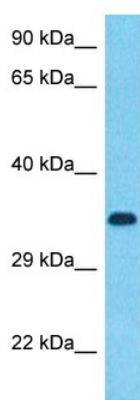
Product data:

Product Type:	Primary Antibodies
Applications:	WB
Reactivity:	Human
Host:	Rabbit
Clonality:	Polyclonal
Immunogen:	The immunogen is a synthetic peptide directed towards the C-terminal region of Human CNN1
Specificity:	Expected reactivity: Human
Formulation:	Liquid. Purified antibody supplied in 1x PBS buffer with 0.09% (w/v) sodium azide and 2% sucrose. <i>Note that this product is shipped as lyophilized powder to China customers.</i>
Concentration:	lot specific
Purification:	Affinity purified
Conjugation:	Unconjugated
Storage:	For short term use, store at 2-8°C up to 1 week. For long term storage, store at -20°C in small aliquots to prevent freeze-thaw cycles.
Stability:	Shelf life: one year from despatch.
Predicted Protein Size:	32kDa
Gene Name:	calponin 1
Database Link:	NP_001290 Entrez Gene 1264 Human P51911
Background:	CNN1 is a thin filament-associated protein that is implicated in the regulation and modulation of smooth muscle contraction. It is capable of binding to actin, calmodulin, troponin C and tropomyosin. The interaction of calponin with actin inhibits the actomyosin Mg-ATPase activity.
Synonyms:	Sm-Calp; SMCC



[View online »](#)

Product images:



Host: Rabbit
Target Name: CNN1
Sample Tissue: Fetal Liver Lysate
Antibody Dilution: 1.0µg/ml

Host: Rabbit
Target Name: CNN1
Sample Type: Fetal Liver lysates
Antibody Dilution: 1.0ug/ml