

Product datasheet for **TA360044**

Chloride Channel 5 (CLCN5) Rabbit Polyclonal Antibody

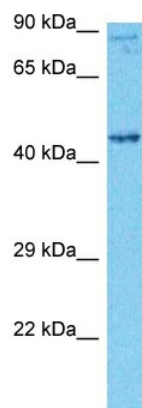
Product data:

Product Type:	Primary Antibodies
Applications:	WB
Reactivity:	Human
Host:	Rabbit
Clonality:	Polyclonal
Immunogen:	The immunogen is a synthetic peptide directed towards the N-terminal region of Human CLCN5
Specificity:	Expected reactivity: Human
Formulation:	Liquid. Purified antibody supplied in 1x PBS buffer with 0.09% (w/v) sodium azide and 2% sucrose. <i>Note that this product is shipped as lyophilized powder to China customers.</i>
Concentration:	lot specific
Purification:	Affinity purified
Conjugation:	Unconjugated
Storage:	For short term use, store at 2-8°C up to 1 week. For long term storage, store at -20°C in small aliquots to prevent freeze-thaw cycles.
Stability:	Shelf life: one year from despatch.
Predicted Protein Size:	82kDa
Gene Name:	chloride voltage-gated channel 5
Database Link:	Entrez Gene 1184 Human P51795
Background:	This gene encodes a member of the CIC family of chloride ion channels and ion transporters. The encoded protein is primarily localized to endosomal membranes and may function to facilitate albumin uptake by the renal proximal tubule. Mutations in this gene have been found in Dent disease and renal tubular disorders complicated by nephrolithiasis. Alternatively spliced transcript variants have been found for this gene.
Synonyms:	CIC-5; CLC5; CLCK2; DENTS; hCIC-K2; hCIC-K2; NPHL1; NPHL2; OTTHUMP00000023279; OTTHUMP00000023281; XLRH; XRN



[View online >](#)

Product images:



Host: Rabbit
Target Name: CLCN5
Sample Tissue: 293T Cell Lysate
Antibody Dilution: 1.0 μ g/ml

Host: Rabbit
Target Name: CLCN5
Sample Type: 293T Whole Cell lysates
Antibody Dilution: 1.0 μ g/ml