

Product datasheet for **TA360043**

Muscarinic Acetylcholine Receptor M3 (CHRM3) Rabbit Polyclonal Antibody

Product data:

Product Type:	Primary Antibodies
Applications:	WB
Reactivity:	Human
Host:	Rabbit
Clonality:	Polyclonal
Immunogen:	The immunogen is a synthetic peptide directed towards the C-terminal region of Human ACM3
Specificity:	Expected reactivity: Human
Formulation:	Liquid. Purified antibody supplied in 1x PBS buffer with 0.09% (w/v) sodium azide and 2% sucrose. <i>Note that this product is shipped as lyophilized powder to China customers.</i>
Concentration:	lot specific
Purification:	Affinity purified
Conjugation:	Unconjugated
Storage:	For short term use, store at 2-8°C up to 1 week. For long term storage, store at -20°C in small aliquots to prevent freeze-thaw cycles.
Stability:	Shelf life: one year from despatch.
Predicted Protein Size:	64kDa
Gene Name:	cholinergic receptor muscarinic 3
Database Link:	XP_006711795 Entrez Gene 1131 Human P20309



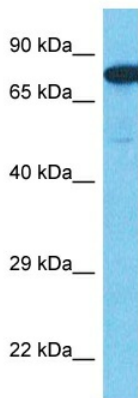
[View online »](#)

Background:

The muscarinic cholinergic receptors belong to a larger family of G protein-coupled receptors. The functional diversity of these receptors is defined by the binding of acetylcholine and includes cellular responses such as adenylate cyclase inhibition, phosphoinositide degeneration, and potassium channel mediation. Muscarinic receptors influence many effects of acetylcholine in the central and peripheral nervous system. The muscarinic cholinergic receptor 3 controls smooth muscle contraction and its stimulation causes secretion of glandular tissue. Alternative promoter use and alternative splicing results in multiple transcript variants that have different tissue specificities.

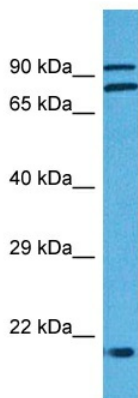
Synonyms:

HM3

Product images:


Host: Rabbit
 Target Name: ACM3
 Sample Tissue: Fetal Liver Lysate
 Antibody Dilution: 1.0µg/ml

Host: Rabbit
 Target Name: ACM3
 Sample Type: Fetal Liver lysates
 Antibody Dilution: 1.0ug/ml



Host: Rabbit
 Target Name: CHRM3
 Sample Type: Lung Tumor Lysate
 Antibody Dilution: 1.0µg/ml

Host: Rabbit
 Target Name: CHRM3
 Sample Tissue: Human Lung Tumor
 Antibody Dilution: 1ug/ml