

Product datasheet for **TA360042**

CLCNKB Rabbit Polyclonal Antibody

Product data:

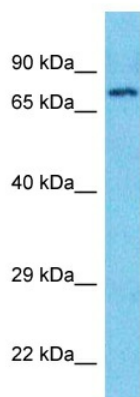
Product Type:	Primary Antibodies
Applications:	WB
Reactivity:	Human
Host:	Rabbit
Clonality:	Polyclonal
Immunogen:	The immunogen is a synthetic peptide directed towards the C-terminal region of Human CLCKB
Specificity:	Expected reactivity: Human
Formulation:	Liquid. Purified antibody supplied in 1x PBS buffer with 0.09% (w/v) sodium azide and 2% sucrose. <i>Note that this product is shipped as lyophilized powder to China customers.</i>
Concentration:	lot specific
Purification:	Affinity purified
Conjugation:	Unconjugated
Storage:	For short term use, store at 2-8°C up to 1 week. For long term storage, store at -20°C in small aliquots to prevent freeze-thaw cycles.
Stability:	Shelf life: one year from despatch.
Predicted Protein Size:	75kDa
Gene Name:	chloride voltage-gated channel Kb
Database Link:	Entrez Gene 1188 Human P51801
Background:	The protein encoded by this gene is a member of the family of voltage-gated chloride channels. Chloride channels have several functions, including the regulation of cell volume, membrane potential stabilization, signal transduction and transepithelial transport. This gene is expressed predominantly in the kidney and may be important for renal salt reabsorption. Mutations in this gene are associated with autosomal recessive Bartter syndrome type 3 (BS3). Alternatively spliced transcript variants encoding different isoforms have been found for this gene.



[View online »](#)

Synonyms: CIC-K2; CIC-Kb; CLCKB; hCIC-Kb; MGC24087

Product images:



Host: Rabbit
Target Name: CLCKB
Sample Tissue: Stomach Tumor Lysate
Antibody Dilution: 1.0 μ g/ml

Host: Rabbit
Target Name: CLCKB
Sample Type: Stomach Tumor lysates
Antibody Dilution: 1.0 μ g/ml