

## Product datasheet for **TA360039**

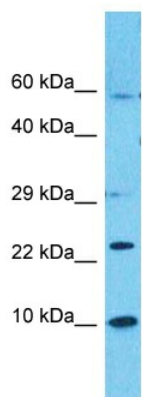
### CKS1 (CKS1B) Rabbit Polyclonal Antibody

#### Product data:

|                         |  |
|-------------------------|--|
| Product Type:           | Primary Antibodies   |
| Applications:           | WB   |
| Reactivity:             | Human  |
| Host:                   | Rabbit   |
| Clonality:              | Polyclonal   |
| Immunogen:              | The immunogen is a synthetic peptide directed towards the N-terminal region of Human CKS1  |
| Specificity:            | <b>Expected reactivity:</b> Human  |
| Formulation:            | Liquid. Purified antibody supplied in 1x PBS buffer with 0.09% (w/v) sodium azide and 2% sucrose.<br><i>Note that this product is shipped as lyophilized powder to China customers.</i>  |
| Concentration:          | lot specific   |
| Purification:           | Affinity purified  |
| Conjugation:            | Unconjugated   |
| Storage:                | For short term use, store at 2-8°C up to 1 week. For long term storage, store at -20°C in small aliquots to prevent freeze-thaw cycles.  |
| Stability:              | Shelf life: one year from despatch.  |
| Predicted Protein Size: | 8kDa   |
| Gene Name:              | CDC28 protein kinase regulatory subunit 1B   |
| Database Link:          | <a href="#">NP_001817</a><br><a href="#">Entrez Gene 1163 Human</a><br><a href="#">P61024</a>  |
| Background:             | CKS1B protein binds to the catalytic subunit of the cyclin dependent kinases and is essential for their biological function. The CKS1B mRNA is found to be expressed in different patterns through the cell cycle in HeLa cells, which reflects a specialized role for the encoded protein. At least two transcript variants have been identified for this gene, and it appears that only one of them encodes a protein. |
| Synonyms:               | CKS-1; CKS1; ckshs1; PNAS-16; PNAS-18; PNAS-143  |



[View online »](#)

**Product images:**

Host: Rabbit  
Target Name: CKS1  
Sample Tissue: Stomach Tumor Lysate  
Antibody Dilution: 1.0 $\mu$ g/ml

Host: Rabbit  
Target Name: CKS1  
Sample Type: Stomach Tumor lysates  
Antibody Dilution: 1.0 $\mu$ g/ml