

## Product datasheet for **TA360034**

### CA6 Rabbit Polyclonal Antibody

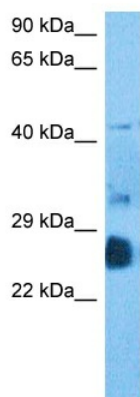
#### Product data:

Product Type:	Primary Antibodies
Applications:	WB
Reactivity:	Human
Host:	Rabbit
Clonality:	Polyclonal
Immunogen:	The immunogen is a synthetic peptide directed towards the middle region of human CAH6
Specificity:	<b>Expected reactivity:</b> Human
Formulation:	Liquid. Purified antibody supplied in 1x PBS buffer with 0.09% (w/v) sodium azide and 2% sucrose. <i>Note that this product is shipped as lyophilized powder to China customers.</i>
Concentration:	lot specific
Purification:	Affinity purified
Conjugation:	Unconjugated
Storage:	For short term use, store at 2-8°C up to 1 week. For long term storage, store at -20°C in small aliquots to prevent freeze-thaw cycles.
Stability:	Shelf life: one year from despatch.
Predicted Protein Size:	27 kDa
Gene Name:	carbonic anhydrase 6
Database Link:	<a href="#">NP_001206.2</a> <a href="#">Entrez Gene 765 Human</a> <a href="#">P23280-3</a>
Background:	The protein encoded by this gene is one of several isozymes of carbonic anhydrase. This protein is found only in salivary glands and saliva and protein may play a role in the reversible hydration of carbon dioxide though its function in saliva is unknown.
Synonyms:	CA-VI; GUSTIN; MGC21256
Protein Families:	Druggable Genome, Secreted Protein
Protein Pathways:	Nitrogen metabolism



[View online »](#)

## Product images:



Host: Rabbit  
Target Name: CAH6  
Sample Type: HT1080 Cell Lysate  
Antibody Dilution: 1.0 $\mu$ g/ml

Host: Rabbit  
Target Name: CAH6  
Sample Tissue: HT1080 Whole cell lysates  
Antibody Dilution: 1.0 $\mu$ g/ml