

## Product datasheet for **TA360028**

### BNC1 Rabbit Polyclonal Antibody

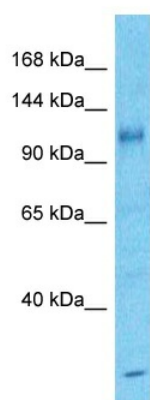
#### Product data:

Product Type:	Primary Antibodies
Applications:	WB
Reactivity:	Human
Host:	Rabbit
Clonality:	Polyclonal
Immunogen:	The immunogen is a synthetic peptide directed towards the middle region of Human BNC1
Specificity:	<b>Expected reactivity:</b> Human
Formulation:	Liquid. Purified antibody supplied in 1x PBS buffer with 0.09% (w/v) sodium azide and 2% sucrose.
Concentration:	lot specific
Purification:	Affinity purified
Conjugation:	Unconjugated
Storage:	For short term use, store at 2-8°C up to 1 week. For long term storage, store at -20°C in small aliquots to prevent freeze-thaw cycles.
Stability:	Shelf life: one year from despatch.
Predicted Protein Size:	109kDa
Gene Name:	basonuclin 1
Database Link:	<a href="#">NP_001708</a> <a href="#">Entrez Gene 646 Human</a> <a href="#">Q01954</a>
Background:	The protein encoded by this gene is a zinc finger protein present in the basal cell layer of the epidermis and in hair follicles. It is also found in abundance in the germ cells of testis and ovary. This protein is thought to play a regulatory role in keratinocyte proliferation and it may also be a regulator for rRNA transcription. Alternative splicing of this gene results in multiple transcript variants, and multiple polyadenylation sites are indicated.
Synonyms:	basonuclin; BNC; BSN1; HsT19447



[View online »](#)

## Product images:



Host: Rabbit  
Target Name: BNC1  
Sample Tissue: Stomach Tumor Lysate  
Antibody Dilution: 1.0 $\mu$ g/ml

Host: Rabbit  
Target Name: BNC1  
Sample Type: Stomach Tumor lysates  
Antibody Dilution: 1.0ug/ml