

Product datasheet for **TA360022**

Annexin A2 (ANXA2) Rabbit Polyclonal Antibody

Product data:

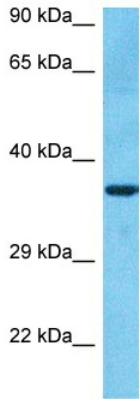
Product Type:	Primary Antibodies
Applications:	WB
Reactivity:	Human, Mouse
Host:	Rabbit
Clonality:	Polyclonal
Immunogen:	The immunogen is a synthetic peptide directed towards the N-terminal region of Human ANXA2
Specificity:	Expected reactivity: Human
Formulation:	Liquid. Purified antibody supplied in 1x PBS buffer with 0.09% (w/v) sodium azide and 2% sucrose. <i>Note that this product is shipped as lyophilized powder to China customers.</i>
Concentration:	lot specific
Purification:	Affinity purified
Conjugation:	Unconjugated
Storage:	For short term use, store at 2-8°C up to 1 week. For long term storage, store at -20°C in small aliquots to prevent freeze-thaw cycles.
Stability:	Shelf life: one year from despatch.
Predicted Protein Size:	37kDa
Gene Name:	annexin A2
Database Link:	NP_004030 Entrez Gene 302 Human P07355
Background:	This gene encodes a member of the annexin family. Members of this calcium-dependent phospholipid-binding protein family play a role in the regulation of cellular growth and in signal transduction pathways. This protein functions as an autocrine factor which heightens osteoclast formation and bone resorption. This gene has three pseudogenes located on chromosomes 4, 9 and 10, respectively. Multiple alternatively spliced transcript variants encoding different isoforms have been found for this gene.



[View online »](#)

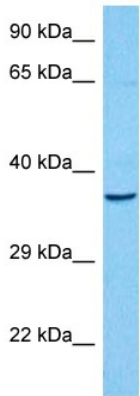
Synonyms: Annexin-2; ANX2; ANX2L4; CAL1H; Chromobindin-8; LIP2; LPC2; LPC2D; P36; PAP-IV

Product images:



Host: Rabbit
 Target Name: ANXA2
 Sample Tissue: HeLa Cell Lysate
 Antibody Dilution: 1.0µg/ml

Host: Rabbit
 Target Name: ANXA2
 Sample Type: HeLa Whole Cell lysates
 Antibody Dilution: 1.0ug/ml



Host: Rabbit
 Target Name: Anxa2
 Sample Type: Mouse Skeletal Muscle Lysate
 Antibody Dilution: 1.0µg/ml

Host: Mouse
 Target Name: ANXA2
 Sample Tissue: Mouse Skeletal Muscle
 Antibody Dilution: 1 ug/ml