

Product datasheet for **TA360021**

ARF1 Rabbit Polyclonal Antibody

Product data:

Product Type:	Primary Antibodies
Applications:	WB
Reactivity:	Human
Host:	Rabbit
Clonality:	Polyclonal
Immunogen:	The immunogen is a synthetic peptide directed towards the N terminal region of human ARF1
Specificity:	Expected reactivity: Human
Formulation:	Liquid. Purified antibody supplied in 1x PBS buffer with 0.09% (w/v) sodium azide and 2% sucrose. <i>Note that this product is shipped as lyophilized powder to China customers.</i>
Concentration:	lot specific
Purification:	Affinity purified
Conjugation:	Unconjugated
Storage:	For short term use, store at 2-8°C up to 1 week. For long term storage, store at -20°C in small aliquots to prevent freeze-thaw cycles.
Stability:	Shelf life: one year from despatch.
Predicted Protein Size:	19 kDa
Gene Name:	ADP ribosylation factor 1
Database Link:	NP_001019397.1 Entrez Gene 375 Human P84077



[View online »](#)

Background:

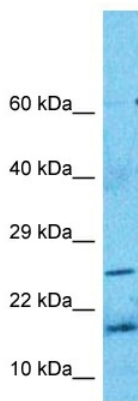
ADP-ribosylation factor 1 (ARF1) is a member of the human ARF gene family. The family members encode small guanine nucleotide-binding proteins that stimulate the ADP-ribosyltransferase activity of cholera toxin and play a role in vesicular trafficking as activators of phospholipase D. The gene products, including 6 ARF proteins and 11 ARF-like proteins, constitute a family of the RAS superfamily. The ARF proteins are categorized as class I (ARF1, ARF2 and ARF3), class II (ARF4 and ARF5) and class III (ARF6), and members of each class share a common gene organization. The ARF1 protein is localized to the Golgi apparatus and has a central role in intra-Golgi transport. Multiple alternatively spliced transcript variants encoding the same protein have been found for this gene.

Synonyms:

ARF1

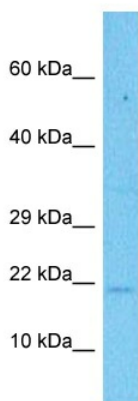
Protein Pathways:

Vibrio cholerae infection

Product images:


Host: Rabbit
 Target Name: ARF1
 Sample Type: Stomach Tumor Lysate
 Antibody Dilution: 1.0µg/ml

Host: Rabbit
 Target Name: ARF1
 Sample Tissue: Stomach Tumor lysates
 Antibody Dilution: 1.0ug/ml



Host: Rabbit
 Target Name: ARF1
 Sample Type: COLO205 Cell Lysate
 Antibody Dilution: 1.0µg/ml

Host: Rabbit
 Target Name: ARF1
 Sample Tissue: Human COLO205 Whole Cell
 Antibody Dilution: 1ug/ml