

## Product datasheet for **TA360018**

### Apolipoprotein F (APOF) Rabbit Polyclonal Antibody

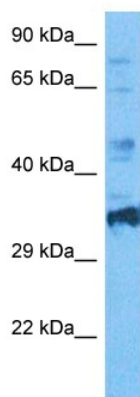
#### Product data:

Product Type:	Primary Antibodies
Applications:	WB
Reactivity:	Human
Host:	Rabbit
Clonality:	Polyclonal
Immunogen:	The immunogen is a synthetic peptide directed towards the middle region of human APOF
Specificity:	<b>Expected reactivity:</b> Human
Formulation:	Liquid. Purified antibody supplied in 1x PBS buffer with 0.09% (w/v) sodium azide and 2% sucrose.
Concentration:	lot specific
Purification:	Affinity purified
Conjugation:	Unconjugated
Storage:	For short term use, store at 2-8°C up to 1 week. For long term storage, store at -20°C in small aliquots to prevent freeze-thaw cycles.
Stability:	Shelf life: one year from despatch.
Predicted Protein Size:	35 kDa
Gene Name:	apolipoprotein F
Database Link:	<a href="#">NP_001629.1</a> <a href="#">Entrez Gene 319 Human</a> <a href="#">Q13790</a>
Background:	The product of this gene is one of the minor apolipoproteins found in plasma. This protein forms complexes with lipoproteins and may be involved in transport and/or esterification of cholesterol.
Synonyms:	Apo-F; DKFZp781G18150; LTIP; MGC22520
Protein Families:	Druggable Genome, Secreted Protein



[View online »](#)

## Product images:



Host: Rabbit  
Target Name: APOF  
Sample Tissue: Jurkat Cell Lysate  
Antibody Dilution: 2.0µg/ml

Host: Rabbit  
Target Name: APOF  
Sample Tissue: Human Jurkat Whole Cell  
Antibody Dilution: 1.0ug/ml