

## Product datasheet for **TA360011**

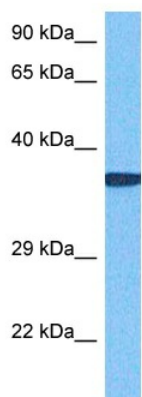
### ANXA8L2 Rabbit Polyclonal Antibody

#### Product data:

Product Type:	Primary Antibodies
Applications:	WB
Reactivity:	Human
Host:	Rabbit
Clonality:	Polyclonal
Immunogen:	The immunogen is a synthetic peptide directed towards the middle region of human ANXA8
Specificity:	<b>Expected reactivity:</b> Human
Formulation:	Liquid. Purified antibody supplied in 1x PBS buffer with 0.09% (w/v) sodium azide and 2% sucrose.
Concentration:	lot specific
Purification:	Affinity purified
Conjugation:	Unconjugated
Storage:	For short term use, store at 2-8°C up to 1 week. For long term storage, store at -20°C in small aliquots to prevent freeze-thaw cycles.
Stability:	Shelf life: one year from despatch.
Predicted Protein Size:	35 kDa
Gene Name:	annexin A8
Database Link:	<a href="#">NP_001035173.1</a> <a href="#">Entrez Gene 653145 Human</a> <a href="#">P13928</a>
Background:	This gene encodes a member of the annexin family of evolutionarily conserved Ca <sup>2+</sup> and phospholipid binding proteins. The encoded protein may function as an anticoagulant that indirectly inhibits the thromboplastin-specific complex. Overexpression of this gene has been associated with acute myelocytic leukemia. A highly similar duplicated copy of this gene is found in close proximity on the long arm of chromosome 10.



[View online »](#)

**Product images:**

Host: Rabbit  
Target Name: ANXA8  
Sample Type: U937 Cell Lysate  
Antibody Dilution: 1.0 $\mu$ g/ml

Host: Rabbit  
Target Name: ANXA8  
Sample Tissue: U937 Whole cell lysates  
Antibody Dilution: 1.0ug/ml