

Product datasheet for **TA360001**

MEX3D Rabbit Polyclonal Antibody

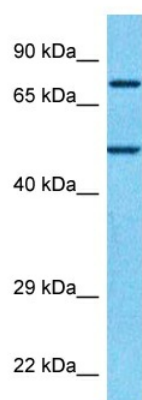
Product data:

Product Type:	Primary Antibodies
Applications:	WB
Reactivity:	Human
Host:	Rabbit
Clonality:	Polyclonal
Immunogen:	The immunogen is a synthetic peptide directed towards the middle region of Human MEX3D
Specificity:	Expected reactivity: Human
Formulation:	Liquid. Purified antibody supplied in 1x PBS buffer with 0.09% (w/v) sodium azide and 2% sucrose.
Concentration:	lot specific
Purification:	Affinity purified
Conjugation:	Unconjugated
Storage:	For short term use, store at 2-8°C up to 1 week. For long term storage, store at -20°C in small aliquots to prevent freeze-thaw cycles.
Stability:	Shelf life: one year from despatch.
Predicted Protein Size:	71kDa
Gene Name:	mex-3 RNA binding family member D
Database Link:	NP_976049 Entrez Gene 399664 Human Q86XN8
Background:	MEX3D is a RNA binding protein, may be involved in post- transcriptional regulatory mechanisms.
Synonyms:	KIAA2031; MEX-3D; MEX3; OK/SW-cl.4; RKHD1; RNF193; Tino



[View online »](#)

Product images:



Host: Rabbit
Target Name: MEX3D
Sample Tissue: RPMI-8226 Cell Lysate
Antibody Dilution: 1.0µg/ml

Host: Rabbit
Target Name: MEX3D
Sample Type: RPMI-8226 Whole Cell lysates
Antibody Dilution: 1.0ug/ml