

## Product datasheet for **TA359999**

### Nephrocystin 4 (NPHP4) Rabbit Polyclonal Antibody

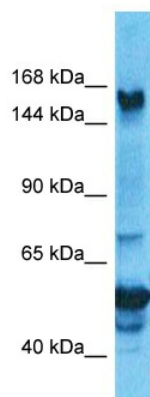
#### Product data:

Product Type:	Primary Antibodies
Applications:	WB
Reactivity:	Human
Host:	Rabbit
Clonality:	Polyclonal
Immunogen:	The immunogen is a synthetic peptide directed towards the N-terminal region of Human NPHP4
Specificity:	<b>Expected reactivity:</b> Human
Formulation:	Liquid. Purified antibody supplied in 1x PBS buffer with 0.09% (w/v) sodium azide and 2% sucrose.
Concentration:	lot specific
Purification:	Affinity purified
Conjugation:	Unconjugated
Storage:	For short term use, store at 2-8°C up to 1 week. For long term storage, store at -20°C in small aliquots to prevent freeze-thaw cycles.
Stability:	Shelf life: one year from despatch.
Predicted Protein Size:	156kDa
Gene Name:	nephronophthisis 4
Database Link:	<a href="#">XP_006710628</a> <a href="#">Entrez Gene 261734 Human</a> <a href="#">O75161</a>
Background:	This gene encodes a protein involved in renal tubular development and function. This protein interacts with nephrocystin, and belongs to a multifunctional complex that is localized to actin- and microtubule-based structures. Mutations in this gene are associated with nephronophthisis type 4, a renal disease, and with Senior-Loken syndrome type 4, a combination of nephronophthisis and retinitis pigmentosa. Alternative splicing results in multiple transcript variants.
Synonyms:	KIAA0673; nephrocystin-4; Nephroretinin; SLSN4



[View online »](#)

Product images:



Host: Rabbit  
Target Name: NPHP4  
Sample Tissue: 786-0 Cell Lysate  
Antibody Dilution: 1.0 $\mu$ g/ml

Host: Rabbit  
Target Name: NPHP4  
Sample Type: 786-0 Whole Cell lysates  
Antibody Dilution: 1.0ug/ml