

Product datasheet for **TA359991**

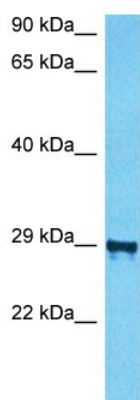
TSGA14 (CEP41) Rabbit Polyclonal Antibody

Product data:

Product Type:	Primary Antibodies
Applications:	WB
Reactivity:	Human
Host:	Rabbit
Clonality:	Polyclonal
Immunogen:	The immunogen is a synthetic peptide directed towards the middle region of Human CEP41
Specificity:	Expected reactivity: Human
Formulation:	Liquid. Purified antibody supplied in 1x PBS buffer with 0.09% (w/v) sodium azide and 2% sucrose.
Concentration:	lot specific
Purification:	Affinity purified
Conjugation:	Unconjugated
Storage:	For short term use, store at 2-8°C up to 1 week. For long term storage, store at -20°C in small aliquots to prevent freeze-thaw cycles.
Stability:	Shelf life: one year from despatch.
Predicted Protein Size:	31kDa
Gene Name:	centrosomal protein 41
Database Link:	Entrez Gene 95681 Human Q9BYV8-5
Background:	This gene encodes a centrosomal and microtubule-binding protein which is predicted to have two coiled-coil domains and a rhodanese domain. In human retinal pigment epithelial cells the protein localized to centrioles and cilia. Mutations in this gene have been associated with Joubert Syndrome 15; an autosomal recessive ciliopathy and neurological disorder. Alternative splicing results in multiple transcript variants.
Synonyms:	JBTS15; TSGA14



[View online »](#)

Product images:


Host: Rabbit
 Target Name: CEP41
 Sample Tissue: 293T Cell Lysate
 Antibody Dilution: 1.0µg/ml

Host: Rabbit
 Target Name: CEP41
 Sample Type: 293T Whole Cell lysates
 Antibody Dilution: 1.0ug/ml